

\$90,000 - Highway 5, Rural Cardston County

MLS® #A2088231

\$90,000

0 Bedroom, 0.00 Bathroom,
Land on 3.67 Acres

NONE, Rural Cardston County, Alberta

Views and location in one package! This lot is ready for your building ideas and would suit a walk out basement. Sit on your front deck and enjoy the mountains all the way from Chief Mountain to Spread Eagle mountain. The property is just 6 km from Payne Lake Provincial Park and 10 minutes to The Waterton Lakes National Park gate. Get away from city life anytime you want with this property only 2.5 hours from Calgary.

Essential Information

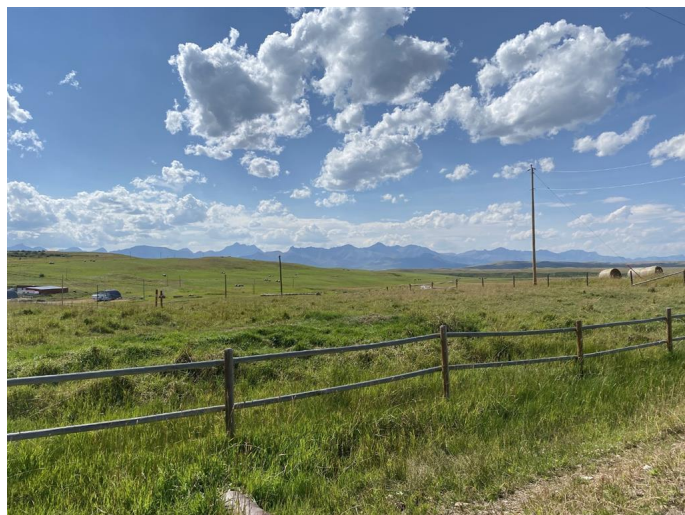
| | |
|-----------|------------------|
| MLS® # | A2088231 |
| Price | \$90,000 |
| Bathrooms | 0.00 |
| Acres | 3.67 |
| Type | Land |
| Sub-Type | Residential Land |
| Status | Active |

Community Information

| | |
|-------------|-----------------------|
| Address | Highway 5 |
| Subdivision | NONE |
| City | Rural Cardston County |
| County | Cardston County |
| Province | Alberta |
| Postal Code | T0M 0K0 |

Exterior

| | |
|-----------------|------------------------------|
| Lot Description | Irregular Lot, Sloped, Views |
|-----------------|------------------------------|



Additional Information

| | |
|----------------|--------------------|
| Date Listed | October 16th, 2023 |
| Days on Market | 657 |
| Zoning | GCR |

Listing Details

| | |
|----------------|------------------------------|
| Listing Office | THE VILLAGER REAL ESTATE CO. |
|----------------|------------------------------|

Data is supplied by Pillar 9â„¢ MLS® System. Pillar 9â„¢ is the owner of the copyright in its MLS® System. Data is deemed reliable but is not guaranteed accurate by Pillar 9â„¢. The trademarks MLS®, Multiple Listing Service® and the associated logos are owned by The Canadian Real Estate Association (CREA) and identify the quality of services provided by real estate professionals who are members of CREA. Used under license.