

\$135,000 - 3 Armand Close, Rural Stettler No. 6, County of

MLS® #A2125434

\$135,000

0 Bedroom, 0.00 Bathroom,
Land on 2.99 Acres

Carlisle Estates, Rural Stettler No. 6, County of, Alberta

Visit REALTOR® website for additional information.

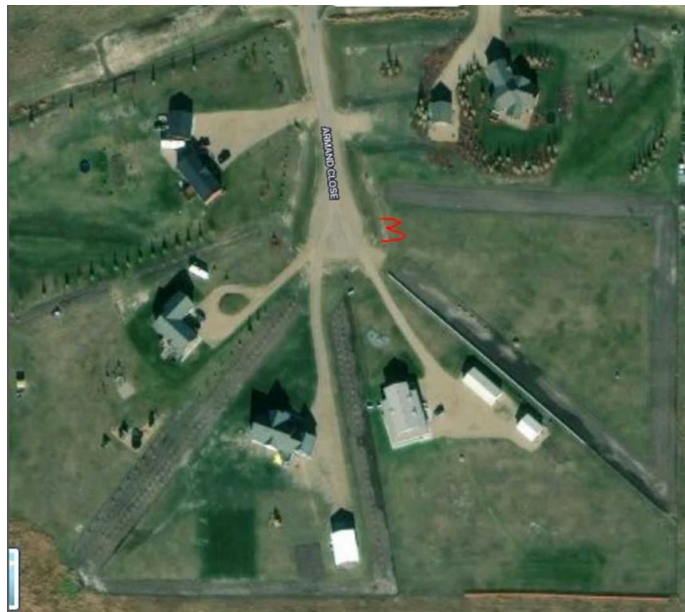
Ideally Located southwest of Meadowlands in Carlisle Estate just outside of Stettler, AB. Close to sports fields, Walmart, West Stetter Park, and many other amenities. School bus services. This Lot is 2.99 Acres, with plenty of open space, lilacs, and spruce trees planted around perimeter. Located in established subdivision serviced to property line: Underground power, gas, and phone. Needs well & sewer. No mobiles.

Essential Information

MLS® #	A2125434
Price	\$135,000
Bathrooms	0.00
Acres	2.99
Type	Land
Sub-Type	Residential Land
Status	Active

Community Information

Address	3 Armand Close
Subdivision	Carlisle Estates
City	Rural Stettler No. 6, County of
County	Stettler No. 6, County of



Province	Alberta
Postal Code	T0C 2L0

Additional Information

Date Listed	April 23rd, 2024
Days on Market	470
Zoning	CR-E

Listing Details

Listing Office	PG Direct Realty Ltd.
----------------	-----------------------

Data is supplied by Pillar 9â„¢ MLS® System. Pillar 9â„¢ is the owner of the copyright in its MLS® System. Data is deemed reliable but is not guaranteed accurate by Pillar 9â„¢. The trademarks MLS®, Multiple Listing Service® and the associated logos are owned by The Canadian Real Estate Association (CREA) and identify the quality of services provided by real estate professionals who are members of CREA. Used under license.