

\$69,900 - #4, 660023 Range Road 224, Rural Athabasca County

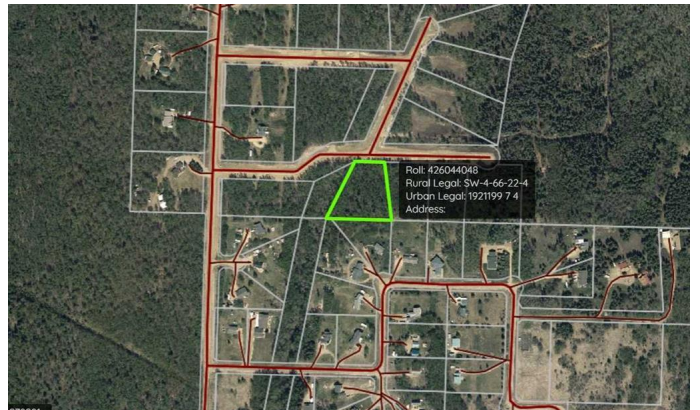
MLS® #A2138944

\$69,900

0 Bedroom, 0.00 Bathroom,
Land on 1.86 Acres

N/A, Rural Athabasca County, Alberta

Yearning for acreage living and need a starting point? Athabasca's newest subdivision is where to start. Lot 4 - a 1.86 acre lot - has been recently cleared and awaits your vision. Not ready to build yet? No worries. There is no time limit to build. Build now, build in the future, or flip it when everything is sold out. Many options. Copper Ridge is less than 5 minutes south of Athabasca and is paved to the entrance of the subdivision. Being on the banks of the Tawatinaw Valley, the rolling topography in the subdivision is gorgeous.



Essential Information

MLS® #	A2138944
Price	\$69,900
Bathrooms	0.00
Acres	1.86
Type	Land
Sub-Type	Residential Land
Status	Active

Community Information

Address	#4, 660023 Range Road 224
Subdivision	N/A
City	Rural Athabasca County
County	Athabasca County
Province	Alberta



Postal Code T9S 2A8

Additional Information

Date Listed June 5th, 2024
Days on Market 328
Zoning CR

Listing Details

Listing Office ROYAL LEPAGE COUNTY REALTY

Data is supplied by Pillar 9â„¢ MLS® System. Pillar 9â„¢ is the owner of the copyright in its MLS® System. Data is deemed reliable but is not guaranteed accurate by Pillar 9â„¢. The trademarks MLS®, Multiple Listing Service® and the associated logos are owned by The Canadian Real Estate Association (CREA) and identify the quality of services provided by real estate professionals who are members of CREA. Used under license.