

# \$45,000 - 1 Riddle Place, Out of Province\_Alberta

MLS® #A2146915

**\$45,000**

0 Bedroom, 0.00 Bathroom,  
Land on 0.59 Acres

NONE, Out of Province\_Alberta,  
Saskatchewan

Big River, Natures' Doorstep! Looking for land in the heart of lake country? The shores of Cowan Lake and great fishing are just steps away! This .59 acre lot in the MD of Big River, is a well treed corner lot and is just waiting for you to make it your own. Services are just across the street. The neighboring .53 acre lot (Lot 2, Riddle Place) located directly the the west is also available.

## Essential Information

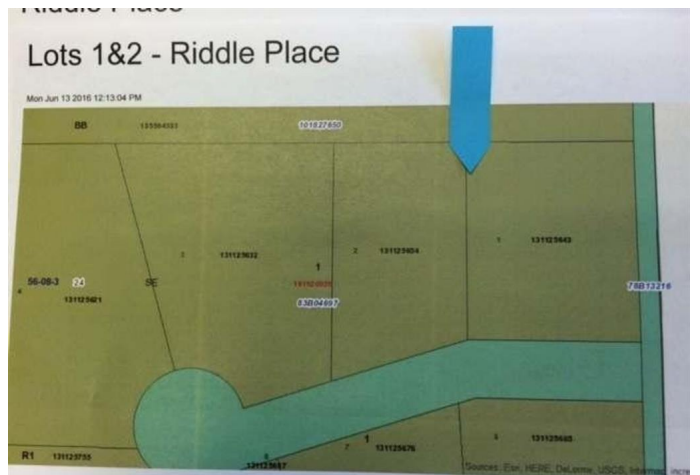
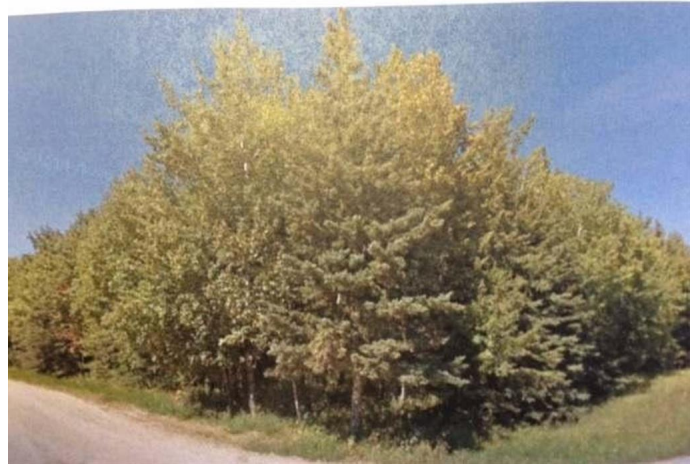
MLS® #	A2146915
Price	\$45,000
Bathrooms	0.00
Acres	0.59
Type	Land
Sub-Type	Residential Land
Status	Active

## Community Information

Address	1 Riddle Place
Subdivision	NONE
City	Out of Province_Alberta
County	Out Of Board
Province	Saskatchewan
Postal Code	S0J 0E0

## Amenities

Utilities	None
-----------	------



**Exterior**

Lot Description      Corner Lot, Rectangular Lot, Wooded

**Additional Information**

Date Listed              July 4th, 2024  
Days on Market        348  
Zoning                    RES

**Listing Details**

Listing Office            COLDWELL BANKER - CITY SIDE REALTY

Data is supplied by Pillar 9â„¸ MLSÂ® System. Pillar 9â„¸ is the owner of the copyright in its MLSÂ® System. Data is deemed reliable but is not guaranteed accurate by Pillar 9â„¸. The trademarks MLSÂ®, Multiple Listing ServiceÂ® and the associated logos are owned by The Canadian Real Estate Association (CREA) and identify the quality of services provided by real estate professionals who are members of CREA. Used under license.