

\$52,700 - 169 10 Avenue Se, Drumheller

MLS® #A2148889

\$52,700

0 Bedroom, 0.00 Bathroom,
Land on 0.12 Acres

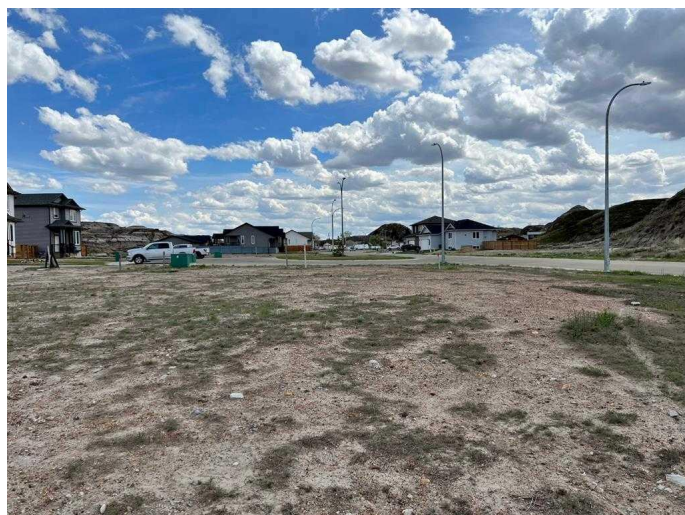
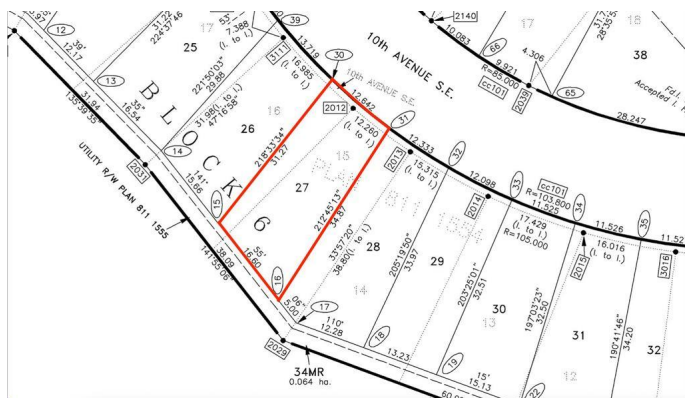
Bankview, Drumheller, Alberta

Residential lots for sale in Drumhellerâ€™s newest subdivision of Hillsview! All of these lots offer full services including power, water, sewer and natural gas at the lot line. These lots are ready to built on. The neighborhood is surrounded by the badlands and well located to downtown Drumheller and the Shops on Highway 9 South. There is the option to combine some of these lots to make your lot even bigger! Start getting your new home plans ready for the Hillsview subdivision today! Limited lots available, so come early to get your choice of lots! Buyer must fill out a development permit application sheet as part of the offer outlining what they will build, who their contractor is, and outline the timeline that starts substantial construction within 8 months and completes construction with 24 months. Offers must be left open for 3 weeks from the date submitted.

Essential Information

MLS® #	A2148889
Price	\$52,700
Bathrooms	0.00
Acres	0.12
Type	Land
Sub-Type	Residential Land
Status	Active

Community Information



Address	169 10 Avenue Se
Subdivision	Bankview
City	Drumheller
County	Drumheller
Province	Alberta
Postal Code	T0J 0Y6

Additional Information

Date Listed	July 17th, 2024
Days on Market	382
Zoning	ND

Listing Details

Listing Office	Century 21 Masters
----------------	--------------------

Data is supplied by Pillar 9â„¢ MLSÂ® System. Pillar 9â„¢ is the owner of the copyright in its MLSÂ® System. Data is deemed reliable but is not guaranteed accurate by Pillar 9â„¢. The trademarks MLSÂ®, Multiple Listing ServiceÂ® and the associated logos are owned by The Canadian Real Estate Association (CREA) and identify the quality of services provided by real estate professionals who are members of CREA. Used under license.