

# \$193,000 - 141 Crescent Avenue, Picture Butte

MLS® #A2175242

**\$193,000**

3 Bedroom, 2.00 Bathroom, 756 sqft

Residential on 0.22 Acres

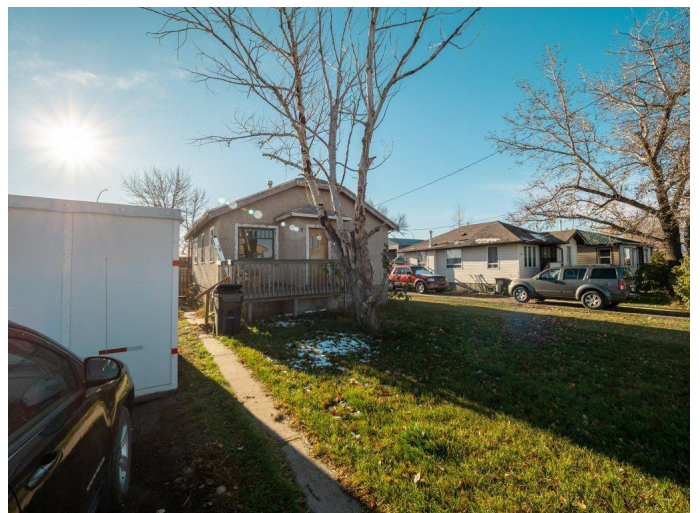
NONE, Picture Butte, Alberta

Welcome to the quaint community of Picture Butte, where you will find this cute 3 bedroom home on a huge lot! Featuring 2 bedrooms and 1 bath on the main floor, and one bedroom with a 2 piece bath in the basement, this home has been well loved and is now ready to be refreshed! The main bathroom has had recent renovations, and the roof was replaced only 4 years ago. The partially finished basement offers the potential to give you space for storage or to put your personal touch on. The diamond of this property is the large lot, with loads of space for your outdoor enjoyment, gardening and evenings with the family. This property offers endless possibilities and for this price it can't be beat! Don't hesitate and contact your realtor for a showing today!

Built in 1950

## Essential Information

MLS® #	A2175242
Price	\$193,000
Bedrooms	3
Bathrooms	2.00
Full Baths	1
Half Baths	1
Square Footage	756
Acres	0.22
Year Built	1950



Type	Residential
Sub-Type	Detached
Style	Bungalow
Status	Active

### Community Information

Address	141 Crescent Avenue
Subdivision	NONE
City	Picture Butte
County	Lethbridge County
Province	Alberta
Postal Code	T0K 1V0

### Amenities

Parking Spaces	1
Parking	Parking Pad

### Interior

Interior Features	See Remarks
Appliances	Dishwasher, Dryer, Refrigerator, Stove(s), Washer
Heating	Natural Gas, Combination
Cooling	None
Has Basement	Yes
Basement	Full, Partially Finished

### Exterior

Exterior Features	None
Lot Description	Irregular Lot
Roof	Asphalt
Construction	Stucco, Wood Frame
Foundation	Poured Concrete

### Additional Information

Date Listed	October 25th, 2024
Days on Market	191
Zoning	R1

### Listing Details

Listing Office	RE/MAX Realty Professionals
----------------	-----------------------------

Data is supplied by Pillar 9â„¢ MLS® System. Pillar 9â„¢ is the owner of the copyright in its MLS® System. Data is deemed reliable but is not guaranteed accurate by Pillar 9â„¢. The trademarks MLS®, Multiple Listing Service® and the associated logos are owned by The Canadian Real Estate Association (CREA) and identify the quality of services provided by real estate professionals who are members of CREA. Used under license.