

# \$295,000 - 1019 391 Township, Rural Red Deer County

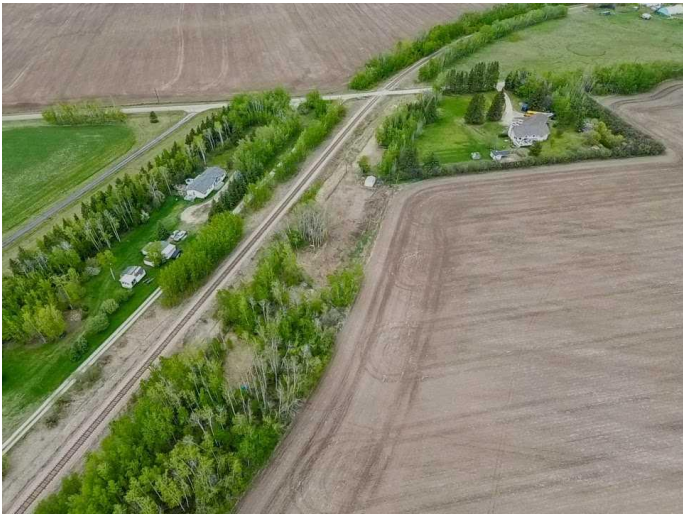
MLS® #A2186783

**\$295,000**

0 Bedroom, 0.00 Bathroom,  
Land on 4.03 Acres

NONE, Rural Red Deer County, Alberta

This property's elongated shape offers ample space for a residence while maintaining a manageable and efficient layout. The flat terrain and straightforward design make it ideal for development, easily tailored to suit your vision. Whether you're planning to build a dream home or you can combine living space with a functional shop or workspace – or exploring options like a kennel, market garden, or hobby farm, this versatile parcel provides endless potential. Set in a peaceful rural residential area, this property offers a unique blend of tranquility and practicality. Whether you're seeking a place to call home or a distinctive investment opportunity, this land invites you to bring your ideas to life. Embrace the charm and possibilities of this one-of-a-kind setting!



## Essential Information

MLS® #	A2186783
Price	\$295,000
Bathrooms	0.00
Acres	4.03
Type	Land
Sub-Type	Residential Land
Status	Active

## Community Information

Address	1019 391 Township
---------	-------------------

Subdivision	NONE
City	Rural Red Deer County
County	Red Deer County
Province	Alberta
Postal Code	T4P 0E8

### **Amenities**

Utilities	Natural Gas Available, Electricity Available, Phone Available, Sewer Available, Water Available
-----------	---

### **Additional Information**

Date Listed	January 10th, 2025
Days on Market	249
Zoning	AG

### **Listing Details**

Listing Office	Coldwell Banker Ontrack Realty
----------------	--------------------------------

Data is supplied by Pillar 9â„¢ MLSÂ® System. Pillar 9â„¢ is the owner of the copyright in its MLSÂ® System. Data is deemed reliable but is not guaranteed accurate by Pillar 9â„¢. The trademarks MLSÂ®, Multiple Listing ServiceÂ® and the associated logos are owned by The Canadian Real Estate Association (CREA) and identify the quality of services provided by real estate professionals who are members of CREA. Used under license.