

# \$590,000 - 32079 Willow Way, Rural Rocky View County

MLS® #A2187178

**\$590,000**

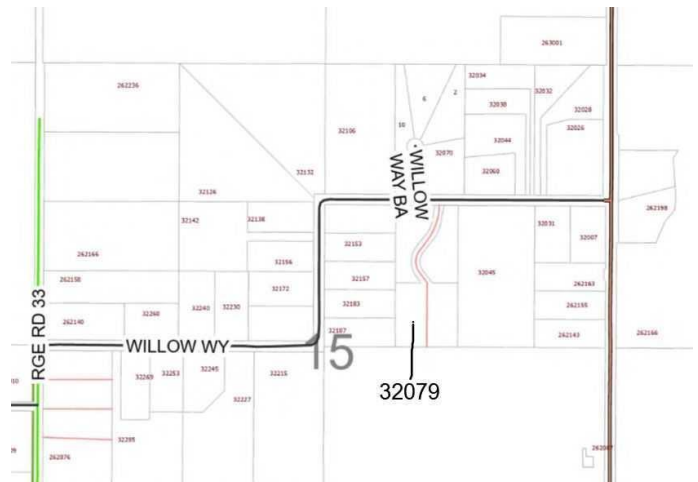
0 Bedroom, 0.00 Bathroom,  
Land on 4.74 Acres

Bearspaw\_Calg, Rural Rocky View County,  
Alberta

This is a new 4.74 acre lot in the Bearspaw Area, just west of Lochend Road. on Willow Way. This property has nice grassland. The Rocky View Water Coop capacity unit (paid for by the developer). This land has a private paved approach, gently rolling land, and is south sloping. There is no restrictive covenant, no building commitment, nor Home Owners Association. The smallest lots in this area are 4 acres in size. The lot corners are triple flagged, and the lot lines have single flags on the stakes. The fence line on the west side is inside the lot by a couple of meters. This is one of four lots on this subdivision. Two are sold. This is a peaceful tranquil setting adding a blend of privacy and open space. Perfect for Country Residential living tucked away in a beautiful setting and away from the main road traffic with no through traffic. Numerous walk out sites available on this lot, with a south backyard exposure.

## Essential Information

MLS® #	A2187178
Price	\$590,000
Bathrooms	0.00
Acres	4.74
Type	Land
Sub-Type	Residential Land
Status	Active



## Community Information

Address	32079 Willow Way
Subdivision	Bearspaw_Calg
City	Rural Rocky View County
County	Rocky View County
Province	Alberta
Postal Code	T4C 2Y4

## Amenities

Utilities	Electricity Available, Water At Lot Line
-----------	--

## Additional Information

Date Listed	January 13th, 2025
Days on Market	154
Zoning	R-RUR

## Listing Details

Listing Office	RE/MAX Real Estate (Mountain View)
----------------	------------------------------------

Data is supplied by Pillar 9â„¢ MLS® System. Pillar 9â„¢ is the owner of the copyright in its MLS® System. Data is deemed reliable but is not guaranteed accurate by Pillar 9â„¢. The trademarks MLS®, Multiple Listing Service® and the associated logos are owned by The Canadian Real Estate Association (CREA) and identify the quality of services provided by real estate professionals who are members of CREA. Used under license.