

\$779,000 - 415 Fireweed Crescent, Fort McMurray

MLS® #A2191615

\$779,000

7 Bedroom, 5.00 Bathroom, 2,919 sqft

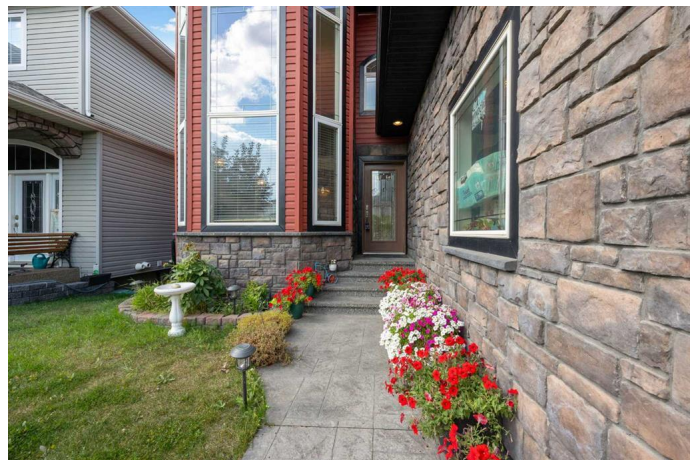
Residential on 0.12 Acres

Timberlea, Fort McMurray, Alberta

Experience Unparalleled Luxury and Craftsmanship in This Exquisite Pond-Facing Estate, Located in one of the City's Most Prestigious neighborhoods! This Extraordinary Custom-Built Home at 415 Fireweed is located Backing onto a Serene Pond with Unrivaled Views. Featuring 7 bedrooms and 5 full bathrooms, including a Legal Walkout Basement Suite, This Property offers Unparalleled Elegance and functionality.

From the moment you arrive, The Stamped concrete driveway and impressive stonework at the garage entrance create a stunning first impression. As you step inside, the attention to detail is clear—this home is a Masterpiece of Craftsmanship, with Solid wood doors and Custom bathrooms featuring Floor-to-Ceiling tile work like you've never seen before. The rich hardwood floors flow throughout, adding warmth and sophistication.

The main level boasts a formal living room and dining room, perfect for hosting, while a den/bedroom with a full bath is ideal for extended family or guests. The open-concept living room, breakfast nook, and gourmet kitchen overlook the tranquil pond, leading to a wraparound deck that offers the best views on the street. The kitchen is a chef's dream, with stainless steel appliances, a ceramic backsplash, granite countertops, a pantry, and a center island. The spacious living room features a gas fireplace and large windows



that frame breathtaking sunsets.

Upstairs, a private office overlooks the formal living room, while the oversized primary suite is designed for royalty. With a gas fireplace, a luxurious ensuite featuring double sinks, a double shower, a corner jetted tub, and a walk-in closet, this is the ultimate retreat. Two more generously sized bedrooms and a 4-piece bath complete the upper level.

The Legal Walkout basement suite offers a fully self-contained, 2-bedroom suite, ideal for rental income or guests. In addition, the lower level includes a fifth bedroom and full bath for the upper occupants.

This is an extraordinary opportunity to experience luxurious living in a home that defines elegance, comfort, and style. Schedule your private viewing today to experience this one-of-a-kind property!

Built in 2008

Essential Information

| | |
|----------------|-------------|
| MLS® # | A2191615 |
| Price | \$779,000 |
| Bedrooms | 7 |
| Bathrooms | 5.00 |
| Full Baths | 5 |
| Square Footage | 2,919 |
| Acres | 0.12 |
| Year Built | 2008 |
| Type | Residential |
| Sub-Type | Detached |
| Style | 2 Storey |
| Status | Active |

Community Information

| | |
|-------------|-----------------------|
| Address | 415 Fireweed Crescent |
| Subdivision | Timberlea |
| City | Fort McMurray |
| County | Wood Buffalo |
| Province | Alberta |
| Postal Code | T9H 1R8 |

Amenities

| | |
|----------------|---|
| Parking Spaces | 5 |
| Parking | Double Garage Attached, Heated Garage, Oversized, Concrete Driveway, Driveway, Front Drive, Garage Door Opener, Garage Faces Front, Insulated, Multiple Driveways |
| # of Garages | 2 |

Interior

| | |
|-------------------|--|
| Interior Features | Built-in Features, Crown Molding, Granite Counters, High Ceilings, Kitchen Island, Open Floorplan, Pantry, Separate Entrance, Sump Pump(s), Chandelier, Closet Organizers, Double Vanity, French Door, Vinyl Windows, Jetted Tub, Soaking Tub, Walk-In Closet(s) |
| Appliances | Central Air Conditioner, Dishwasher, Garage Control(s), Refrigerator, Dryer, Electric Stove, Gas Stove, Microwave Hood Fan, Washer |
| Heating | Forced Air, Natural Gas, Fireplace(s) |
| Cooling | Central Air |
| Fireplace | Yes |
| # of Fireplaces | 2 |
| Fireplaces | Gas, Living Room, Master Bedroom, Stone |
| Has Basement | Yes |
| Basement | Exterior Entry, Finished, Full, Suite, Walk-Out |

Exterior

| | |
|-------------------|---|
| Exterior Features | Private Yard, Barbecue |
| Lot Description | Back Yard, Fruit Trees/Shrub(s), Landscaped, No Neighbours Behind, Views, Backs on to Park/Green Space, Creek/River/Stream/Pond, Greenbelt, Private |
| Roof | Asphalt Shingle |
| Construction | Concrete, Vinyl Siding, Wood Frame |
| Foundation | Poured Concrete |

Additional Information

| | |
|-------------|--------------------|
| Date Listed | January 31st, 2025 |
|-------------|--------------------|

| | |
|----------------|----|
| Days on Market | 90 |
| Zoning | R1 |

Listing Details

| | |
|----------------|----------------|
| Listing Office | RE/MAX Connect |
|----------------|----------------|

Data is supplied by Pillar 9â„¢ MLS® System. Pillar 9â„¢ is the owner of the copyright in its MLS® System. Data is deemed reliable but is not guaranteed accurate by Pillar 9â„¢. The trademarks MLS®, Multiple Listing Service® and the associated logos are owned by The Canadian Real Estate Association (CREA) and identify the quality of services provided by real estate professionals who are members of CREA. Used under license.