

# \$8,900,000 - 251066 Range Road 282 Road, Rural Rocky View County

MLS® #A2194356

**\$8,900,000**

0 Bedroom, 0.00 Bathroom,  
Land on 148.21 Acres

NONE, Rural Rocky View County, Alberta

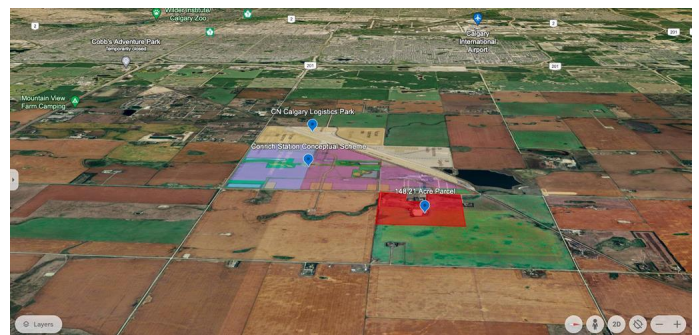
Future Industrial Development Land for sale!  
Located within the Conrich Area Structure Plan and is designated for future Heavy Industrial and light Industrial use. Situated along Range Road 282, the property is minutes away from CN Calgary Logistics Park and other future industrial parks. Low property tax compared to Chestermere and Calgary. Located less than 10 minutes away from Conrich, 15 minutes from Chestermere and 30 minutes away from Calgary. Neighboring properties currently in for sub division and construction to start this year

## Essential Information

MLS® #	A2194356
Price	\$8,900,000
Bathrooms	0.00
Acres	148.21
Type	Land
Sub-Type	Industrial Land
Status	Active

## Community Information

Address	251066 Range Road 282 Road
Subdivision	NONE
City	Rural Rocky View County
County	Rocky View County
Province	Alberta



Postal Code           T1Z 0P3

## **Exterior**

Exterior Features   None

Lot Description     Farm, Level

## **Additional Information**

Date Listed           February 14th, 2025

Days on Market     164

Zoning               A-GEN

## **Listing Details**

Listing Office       RE/MAX Complete Realty

Data is supplied by Pillar 9â„¢ MLS® System. Pillar 9â„¢ is the owner of the copyright in its MLS® System. Data is deemed reliable but is not guaranteed accurate by Pillar 9â„¢. The trademarks MLS®, Multiple Listing Service® and the associated logos are owned by The Canadian Real Estate Association (CREA) and identify the quality of services provided by real estate professionals who are members of CREA. Used under license.