

\$119,000 - 224 12 Avenue Ne, Sundre

MLS® #A2196308

\$119,000

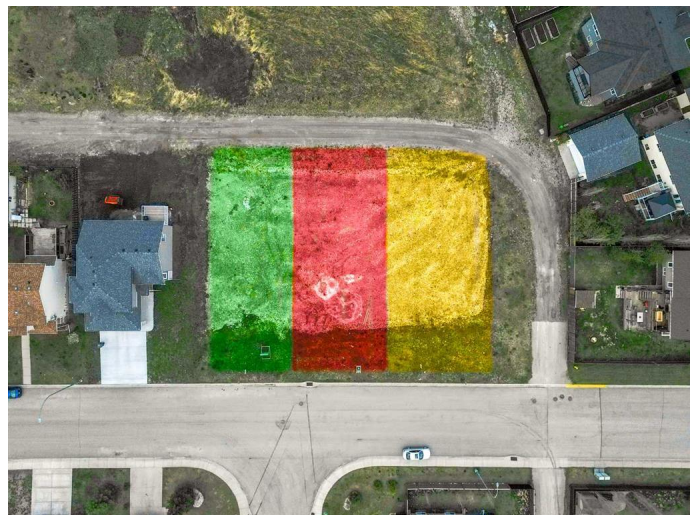
0 Bedroom, 0.00 Bathroom,
Land on 0.15 Acres

NONE, Sundre, Alberta

This exceptional residential building lot in the vibrant town of Sundre offers the perfect opportunity to create your dream home. Situated on the north side of Sundre, this lot provides convenient access to the hospital, school, and recreation center, making it an ideal location for families, retirees, or anyone looking to enjoy small-town living with modern amenities. Sundre is known for its picturesque setting, multiple golf courses, and easy access to West Country recreation, including hiking, fishing, and outdoor adventures in the stunning foothills. Whether you're looking for a peaceful retreat or an active lifestyle, this community has something for everyone. This lot is available for a private build, or you can take advantage of the expertise of Anchored Custom Homes, a trusted builder with a strong track record of quality craftsmanship, to bring your vision to life. Don't miss this opportunity to secure a prime lot in one of Sundre's most desirable areas.

Essential Information

MLS® #	A2196308
Price	\$119,000
Bathrooms	0.00
Acres	0.15
Type	Land
Sub-Type	Residential Land
Status	Active



Community Information

Address	224 12 Avenue Ne
Subdivision	NONE
City	Sundre
County	Mountain View County
Province	Alberta
Postal Code	T0M1X0

Additional Information

Date Listed	February 21st, 2025
Days on Market	118
Zoning	R-1

Listing Details

Listing Office	Coldwell Banker Vision Realty
----------------	-------------------------------

Data is supplied by Pillar 9â„¢ MLSÂ® System. Pillar 9â„¢ is the owner of the copyright in its MLSÂ® System. Data is deemed reliable but is not guaranteed accurate by Pillar 9â„¢. The trademarks MLSÂ®, Multiple Listing ServiceÂ® and the associated logos are owned by The Canadian Real Estate Association (CREA) and identify the quality of services provided by real estate professionals who are members of CREA. Used under license.