

\$110,000 - 32068 Old Smith Highway, Rural Lesser Slave River No. 124, M.D. of

MLS® #A2203249

\$110,000

0 Bedroom, 0.00 Bathroom,
Land on 22.16 Acres

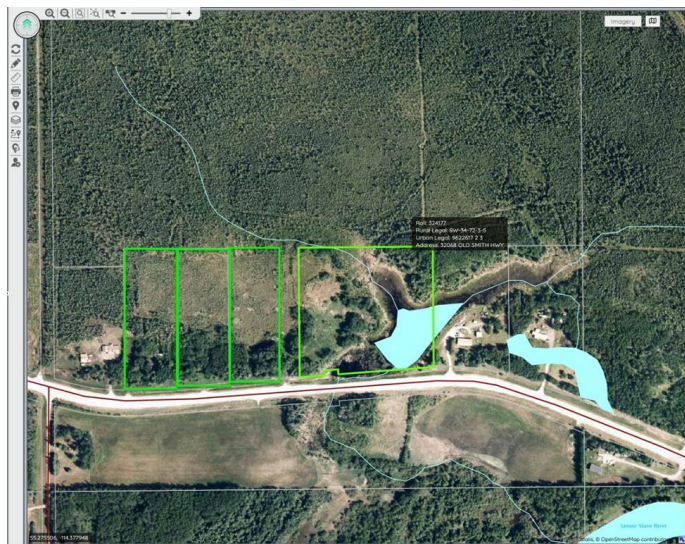
NONE, Rural Lesser Slave River No. 124,
M.D. of, Alberta

***Serious Seller â€œ Open to Reasonable
Offers*** Rare 4-Parcels Package on Old
Smith Hwy | 22.16 Acres

An incredible opportunity to own four adjacent, individually titled parcels totaling 22.16 acresâ€”offered together as one value-packed package. Whether you're looking to develop, invest, or secure a private retreat, this land delivers exceptional potential. Located just minutes from the Lesser Slave and Moose Rivers, this is a recreational haven for hunting, fishing, and quadding. Positioned close to the Mistue Industrial Park, the Hamlet of Smith, and the full services of Slave Lake, the property offers both seclusion and convenience. This is your chance to own a substantial piece of land in a region that continues to grow. The seller is serious and open to negotiation. Opportunities like this are rareâ€”donâ€™t wait.

Essential Information

MLS® #	A2203249
Price	\$110,000
Bathrooms	0.00
Acres	22.16
Type	Land
Sub-Type	Residential Land



Status Active

Community Information

Address 32068 Old Smith Highway
Subdivision NONE
City Rural Lesser Slave River No. 124, M.D. of
County Lesser Slave River No. 124, M.D. of
Province Alberta
Postal Code T0G 2A4

Amenities

Utilities Electricity Available, High Speed Internet Available, Natural Gas Available, Phone Available, Satellite Internet Available

Exterior

Lot Description Meadow, Rectangular Lot, Square Shaped Lot, Subdivided, Wooded

Additional Information

Date Listed March 20th, 2025
Days on Market 148
Zoning RUS

Listing Details

Listing Office eXp REALTY

Data is supplied by Pillar 9â„¢ MLSÂ® System. Pillar 9â„¢ is the owner of the copyright in its MLSÂ® System. Data is deemed reliable but is not guaranteed accurate by Pillar 9â„¢. The trademarks MLSÂ®, Multiple Listing ServiceÂ® and the associated logos are owned by The Canadian Real Estate Association (CREA) and identify the quality of services provided by real estate professionals who are members of CREA. Used under license.