

\$389,000 - Rr 214 Corner N, Rural Lethbridge County

MLS® #A2203284

\$389,000

0 Bedroom, 0.00 Bathroom,
Land on 4.99 Acres

NONE, Rural Lethbridge County, Alberta

Build Your Dream Home Next to the City of
Lethbridge!

This stunning acreage offers unobstructed views and the perfect blend of rural living with city convenience. Enjoy the peace and space of the countryside while being just minutes from Lethbridge. Whether youâ€™re looking for a quiet retreat or the ideal place to build your dream home, this property provides the best of both worldsâ€”expansive land, breathtaking scenery, and easy access to all city amenities.

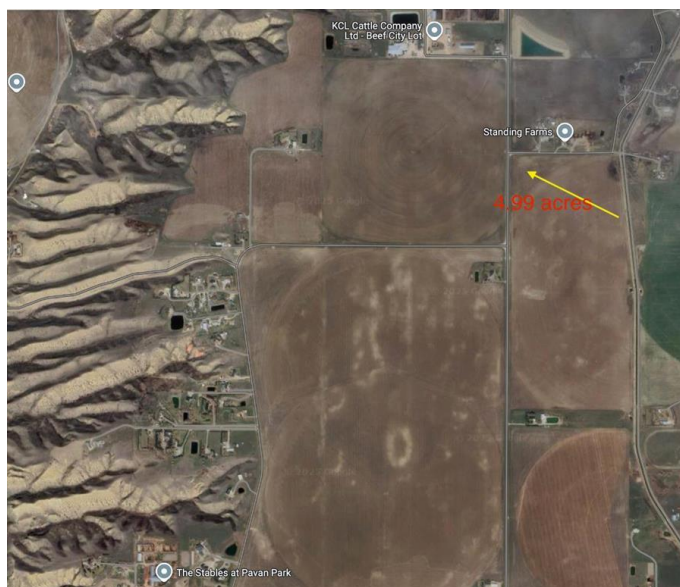
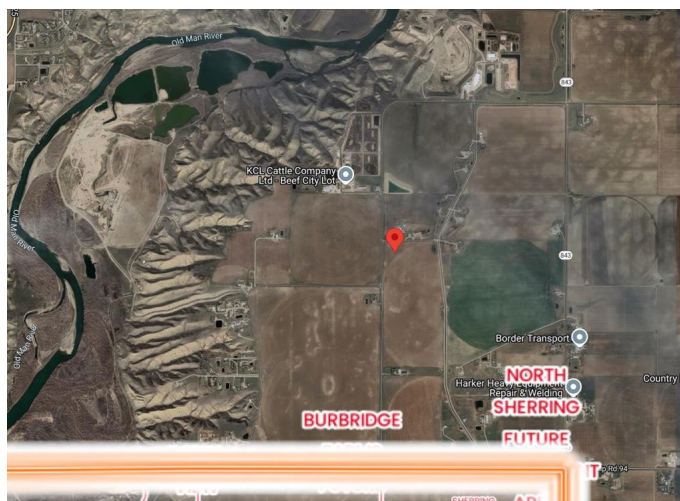
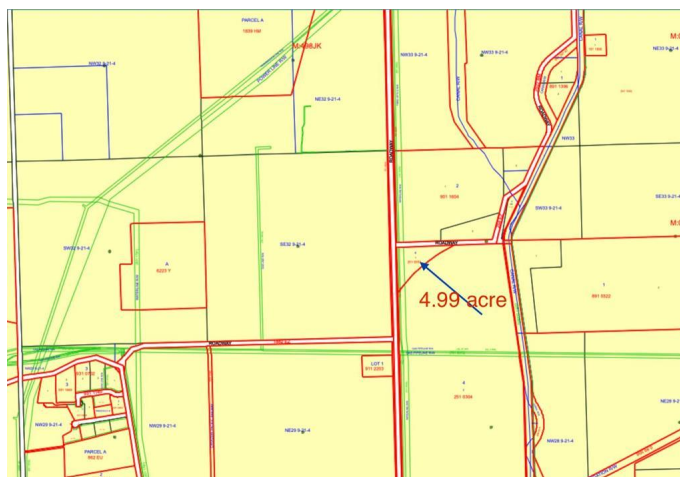
Donâ€™t miss this rare opportunity to own a prime acreage in a sought-after location!

Essential Information

| | |
|-----------|------------------|
| MLS® # | A2203284 |
| Price | \$389,000 |
| Bathrooms | 0.00 |
| Acres | 4.99 |
| Type | Land |
| Sub-Type | Residential Land |
| Status | Active |

Community Information

| | |
|-------------|-------------------------|
| Address | Rr 214 Corner N |
| Subdivision | NONE |
| City | Rural Lethbridge County |



| | |
|-------------|-------------------|
| County | Lethbridge County |
| Province | Alberta |
| Postal Code | T1K 6X5 |

Additional Information

| | |
|----------------|-------------------|
| Date Listed | March 14th, 2025 |
| Days on Market | 141 |
| Zoning | rural residential |

Listing Details

| | |
|----------------|-------------------------------|
| Listing Office | Real Estate Centre - Coaldale |
|----------------|-------------------------------|

Data is supplied by Pillar 9â„¢ MLS® System. Pillar 9â„¢ is the owner of the copyright in its MLS® System. Data is deemed reliable but is not guaranteed accurate by Pillar 9â„¢. The trademarks MLS®, Multiple Listing Service® and the associated logos are owned by The Canadian Real Estate Association (CREA) and identify the quality of services provided by real estate professionals who are members of CREA. Used under license.