

# \$230,000 - Pt Ne-01-54-20w3, Rural

MLS® #A2204461

**\$230,000**

0 Bedroom, 0.00 Bathroom,  
Land on 42.11 Acres

NONE, Rural, Saskatchewan

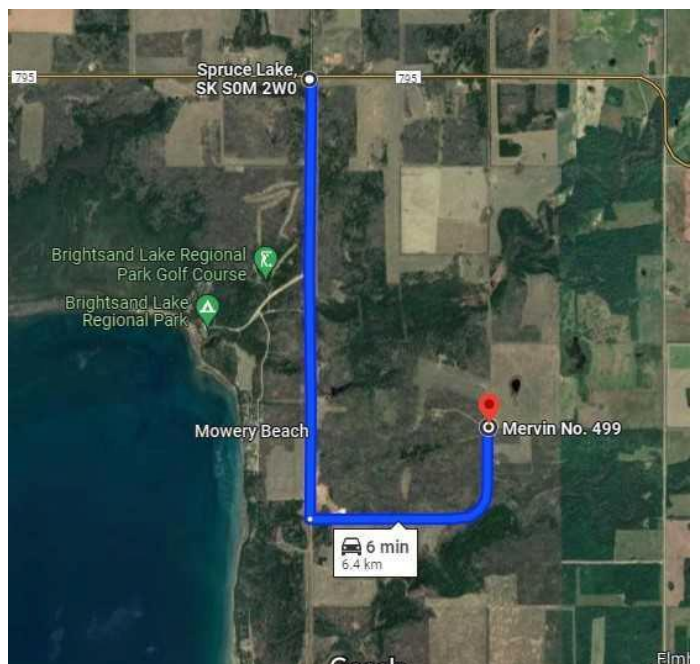
This private 42.11 acre property is ready for you to build your cabin or dream home. Situated within minutes of the Brightsand Lake Regional Park where you can enjoy swimming, boating, ice cream from the concession stand, golfing, hiking and more. This really is a private property that is mostly bush. Ample power and water well on site. You will enjoy the large cook shack with central wood stove with friends and family. If you are looking for a private place to hang out while making make plans for a cabin or home this might be the place. Are you a hunter? You can use this as your hunting camp and getaway point for hunting trips. Add to the existing quad trails for more family fun. If you want the seclusion of mature trees, the quiet of country and recreation at your doorstep, this property might be the one for you! Call to view.

## Essential Information

MLS® #	A2204461
Price	\$230,000
Bathrooms	0.00
Acres	42.11
Type	Land
Sub-Type	Residential Land
Status	Active

## Community Information

Address	Pt Ne-01-54-20w3
---------	------------------



Subdivision	NONE
City	Rural
County	Saskatchewan
Province	Saskatchewan
Postal Code	S0M 0W0

### **Additional Information**

Date Listed	March 22nd, 2025
Days on Market	150
Zoning	AG

### **Listing Details**

Listing Office	RE/MAX OF LLOYDMINSTER
----------------	------------------------

Data is supplied by Pillar 9â„¢ MLS® System. Pillar 9â„¢ is the owner of the copyright in its MLS® System. Data is deemed reliable but is not guaranteed accurate by Pillar 9â„¢. The trademarks MLS®, Multiple Listing Service® and the associated logos are owned by The Canadian Real Estate Association (CREA) and identify the quality of services provided by real estate professionals who are members of CREA. Used under license.