

\$524,900 - 324 3 Street Ne, Slave Lake

MLS® #A2206388

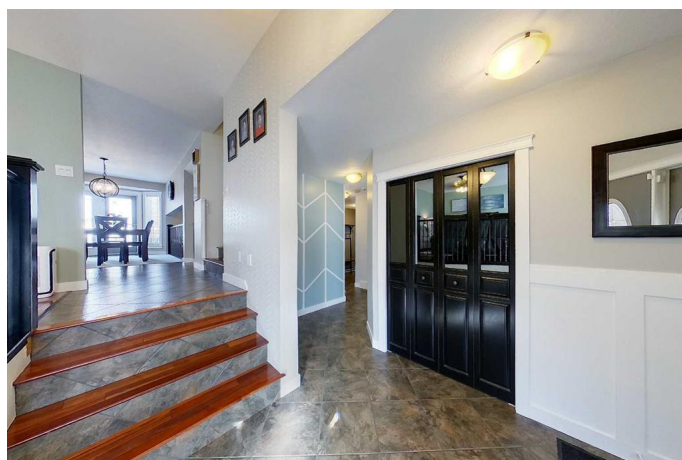
\$524,900

4 Bedroom, 3.00 Bathroom, 2,177 sqft

Residential on 0.16 Acres

NONE, Slave Lake, Alberta

Welcome to the Home Youâ€™ve Been Dreaming Of! This stunning custom-built 4-level split is like new and nestled in one of Slave Lakeâ€™s most sought-after N.E. neighbourhoods. With 4 spacious bedrooms, 3 beautifully appointed bathrooms, and a heated double-attached garage, this 2,177 sq. ft. home is the perfect blend of elegance, comfort, and functionality. From the moment you step inside, you're greeted by a bright and open entryway featuring luxurious tigerwood flooring paired with durable ceramic tile. The expansive living room, complete with a charming bay window, is bathed in natural light and flows seamlessly into the dining area and show-stopping kitchen. The kitchen is truly the heart of this homeâ€™a chefâ€™s paradiseâ€™featuring antique-style cabinetry, built-in appliances, an oversized island, tile backsplash, and gleaming marble countertops. Patio doors off the dining area lead you to a fully landscaped backyard with 2-tiered decks, a gazebo, and all the space you need for relaxing or entertaining. Cozy up in the family room, where a mantled wood-burning fireplace is flanked by custom built-in shelvingâ€™ideal for those quiet nights or family gatherings. Upstairs, the primary suite offers a private retreat with a walk-in closet and a stylish 3-piece ensuite. Two additional bedrooms and a sleek 4-piece bath complete this level, all enhanced with built-in storage, marble countertops, and designer tile. The fully finished basement is made for entertaining



and unwindingâ€”featuring a recreation room with Bose surround sound, a dedicated workout space with soft mat flooring, a laundry/utility room, and an impressively large crawlspace for all your storage needs. This is more than a houseâ€”itâ€™s a lifestyle. Donâ€™t waitâ€”your forever home is finally here.

Built in 1992

Essential Information

MLS® #	A2206388
Price	\$524,900
Bedrooms	4
Bathrooms	3.00
Full Baths	3
Square Footage	2,177
Acres	0.16
Year Built	1992
Type	Residential
Sub-Type	Detached
Style	4 Level Split
Status	Active

Community Information

Address	324 3 Street Ne
Subdivision	NONE
City	Slave Lake
County	Lesser Slave River No. 124, M.D. of
Province	Alberta
Postal Code	T0G2A2

Amenities

Utilities	Cable Connected, Electricity Connected, Fiber Optics Available, High Speed Internet Available, Natural Gas Connected, Phone Connected, Sewer Connected, Water Connected
Parking Spaces	5
Parking	Concrete Driveway, Double Garage Attached, Garage Faces Front, Heated Garage, On Street

of Garages 5

Interior

Interior Features Built-in Features, Central Vacuum, Closet Organizers, Granite Counters, High Ceilings, Kitchen Island, No Smoking Home, Storage, Sump Pump(s), Vinyl Windows, Walk-In Closet(s), Ceiling Fan(s), Crown Molding, Recessed Lighting, Separate Entrance, Track Lighting

Appliances Central Air Conditioner, Dishwasher, Microwave, Range Hood, Refrigerator, Washer/Dryer, Electric Cooktop, Garburator

Heating Forced Air, Natural Gas, Fireplace(s)

Cooling Central Air

Fireplace Yes

of Fireplaces 1

Fireplaces Living Room, Mantle, Stone, Wood Burning, Blower Fan, Glass Doors, Raised Hearth

Has Basement Yes

Basement Finished, Full

Exterior

Exterior Features Fire Pit, Private Yard, Storage, Rain Gutters

Lot Description Rectangular Lot

Roof Asphalt Shingle

Construction Stone, Vinyl Siding, Wood Frame

Foundation Wood

Additional Information

Date Listed March 27th, 2025

Days on Market 34

Zoning R1

Listing Details

Listing Office eXp REALTY

Data is supplied by Pillar 9â„¢ MLSÂ® System. Pillar 9â„¢ is the owner of the copyright in its MLSÂ® System. Data is deemed reliable but is not guaranteed accurate by Pillar 9â„¢. The trademarks MLSÂ®, Multiple Listing ServiceÂ® and the associated logos are owned by The Canadian Real Estate Association (CREA) and identify the quality of services provided by real estate professionals who are members of CREA. Used under license.