

\$139,900 - 103, 709 6 Avenue Se, Slave Lake

MLS® #A2206692

\$139,900

3 Bedroom, 1.00 Bathroom, 962 sqft
Residential on 0.00 Acres

NONE, Slave Lake, Alberta

Discover the epitome of comfort and convenience in this well-maintained 3-bedroom, 1-bathroom apartment in Pine Manor. Boasting excellent condition and a strategic location close to schools, downtown amenities, and playgrounds, this property presents a fantastic investment opportunity, or is perfect for your starter home! Don't miss your chance to own a piece of prime real estate that offers both comfort and investment potential.

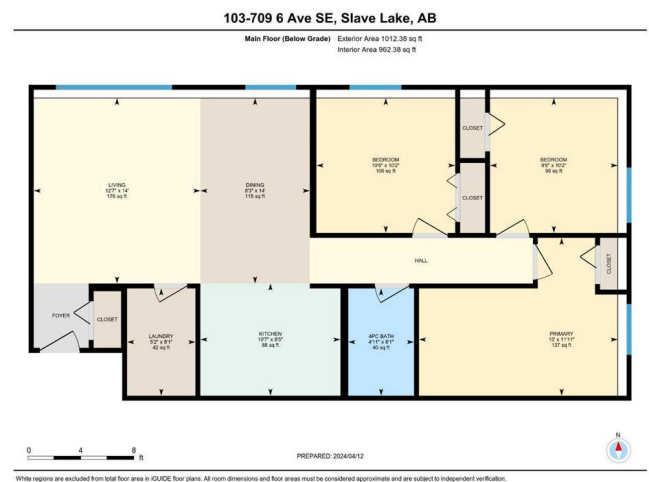
Built in 2012

Essential Information

MLS® #	A2206692
Price	\$139,900
Bedrooms	3
Bathrooms	1.00
Full Baths	1
Square Footage	962
Acres	0.00
Year Built	2012
Type	Residential
Sub-Type	Apartment
Style	Single Level Unit
Status	Active

Community Information

Address	103, 709 6 Avenue Se
Subdivision	NONE



White regions are excluded from total floor area in GUIDE floor plans. All room dimensions and floor areas must be considered approximate and are subject to independent verification.

City	Slave Lake
County	Lesser Slave River No. 124, M.D. of
Province	Alberta
Postal Code	T0G 2A3

Amenities

Amenities	None
Parking Spaces	2
Parking	Off Street

Interior

Interior Features	No Animal Home, Open Floorplan
Appliances	Dishwasher, Range Hood, Refrigerator, Washer/Dryer, Range
Heating	Boiler
Cooling	None
# of Stories	3

Exterior

Exterior Features	None
Construction	Wood Frame

Additional Information

Date Listed	March 28th, 2025
Days on Market	35
Zoning	R3

Listing Details

Listing Office	ROYAL LEPAGE PROGRESSIVE REALTY
----------------	---------------------------------

Data is supplied by Pillar 9â„¢ MLS® System. Pillar 9â„¢ is the owner of the copyright in its MLS® System. Data is deemed reliable but is not guaranteed accurate by Pillar 9â„¢. The trademarks MLS®, Multiple Listing Service® and the associated logos are owned by The Canadian Real Estate Association (CREA) and identify the quality of services provided by real estate professionals who are members of CREA. Used under license.