

# \$1,995,000 - 120 Acres Range Road 281, Rural Rocky View County

MLS® #A2210463

**\$1,995,000**

0 Bedroom, 0.00 Bathroom,  
Land on 120.01 Acres

NONE, Rural Rocky View County, Alberta

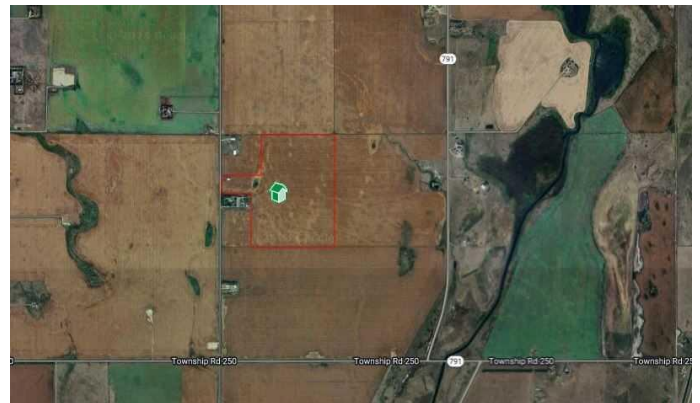
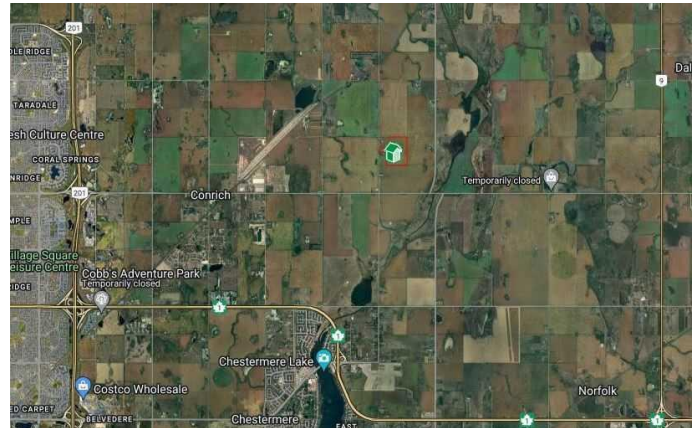
Here are 120 Acres of farmland that are currently zoned AG-GEN but are strategically and conveniently located for someone with a longer term vision for the area and property. The parcel sits just outside the current Conrich Area Structure Plan Boundary and about 3.5km from the CN Calgary Logistics Park. It is only 5km from Conrich, 6km from Chestermere and 8.5km from Calgary. The property currently has a 36â€™™x48â€™™ shop that is about 10-15 years old and the land is leasing for farming year to year with rotational crops. A treated water line has been laid on the west side of the road while power and gas is on both sides of the property. Access is directly off of Range Road 281. Come and explore for yourself today.

## Essential Information

MLS® #	A2210463
Price	\$1,995,000
Bathrooms	0.00
Acres	120.01
Type	Land
Sub-Type	Commercial Land
Status	Active

## Community Information

Address 120 Acres Range Road 281



Subdivision	NONE
City	Rural Rocky View County
County	Rocky View County
Province	Alberta
Postal Code	T0M 0T0

### **Amenities**

Utilities	None
-----------	------

### **Additional Information**

Date Listed	April 10th, 2025
Days on Market	116
Zoning	A-GEN

### **Listing Details**

Listing Office	Coldwell Banker Home Smart Real Estate
----------------	--

Data is supplied by Pillar 9â„¢ MLS® System. Pillar 9â„¢ is the owner of the copyright in its MLS® System. Data is deemed reliable but is not guaranteed accurate by Pillar 9â„¢. The trademarks MLS®, Multiple Listing Service® and the associated logos are owned by The Canadian Real Estate Association (CREA) and identify the quality of services provided by real estate professionals who are members of CREA. Used under license.