

\$475,000 - 429 Maple Crescent, Picture Butte

MLS® #A2211598

\$475,000

5 Bedroom, 3.00 Bathroom, 1,436 sqft

Residential on 0.15 Acres

NONE, Picture Butte, Alberta

Welcome to 429 Maple Crescent! This home is a fully finished, one owner, 1436 sq ft raised bungalow home located in a very desirable neighborhood. Its been meticulously maintained and cared for, and is basically turn key move in ready! So many recent upgrades including flooring, counter tops, paint, A/C, hot water tank, appliances, and newer shingles. 5 total bedrooms, 3 bathrooms, main floor laundry, and a rear deck off the kitchen overlooking an open field. Easy to show, and quick possession is available!

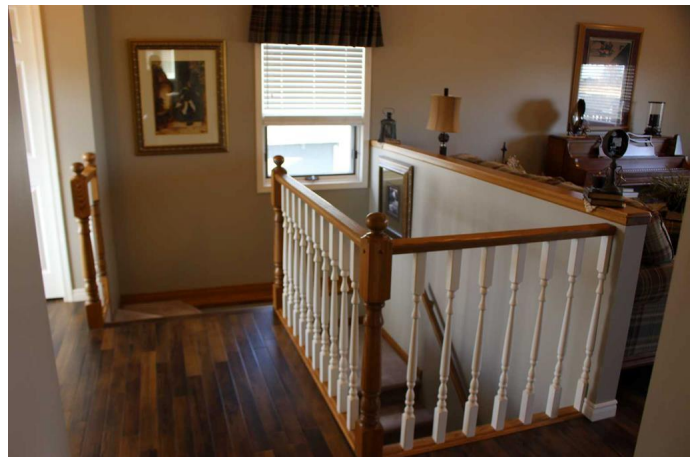
Built in 1995

Essential Information

MLS® #	A2211598
Price	\$475,000
Bedrooms	5
Bathrooms	3.00
Full Baths	3
Square Footage	1,436
Acres	0.15
Year Built	1995
Type	Residential
Sub-Type	Detached
Style	Bungalow
Status	Active

Community Information

Address 429 Maple Crescent



Subdivision	NONE
City	Picture Butte
County	Lethbridge County
Province	Alberta
Postal Code	T0K 1V0

Amenities

Parking Spaces	4
Parking	Double Garage Attached, Driveway
# of Garages	2

Interior

Interior Features	Built-in Features, No Smoking Home, See Remarks, Walk-In Closet(s)
Appliances	Dishwasher, Garage Control(s), Microwave Hood Fan, Refrigerator, Stove(s), Washer/Dryer, Window Coverings
Heating	Forced Air
Cooling	Central Air
Fireplace	Yes
# of Fireplaces	1
Fireplaces	Gas
Has Basement	Yes
Basement	Finished, Full

Exterior

Exterior Features	Other, Private Yard, Storage
Lot Description	Back Lane, Back Yard, Landscaped, See Remarks
Roof	Asphalt Shingle
Construction	Composite Siding, Stucco, Vinyl Siding
Foundation	Poured Concrete

Additional Information

Date Listed	April 14th, 2025
Days on Market	15
Zoning	R1

Listing Details

Listing Office	RE/MAX REAL ESTATE - LETHBRIDGE (PICTURE BUTTE)
----------------	---

Data is supplied by Pillar 9â„¢ MLSÂ® System. Pillar 9â„¢ is the owner of the copyright in its MLSÂ® System. Data is deemed reliable but is not guaranteed accurate by Pillar 9â„¢. The trademarks MLSÂ®, Multiple Listing ServiceÂ® and the associated logos are owned by The Canadian Real Estate Association (CREA) and identify the quality of services

