

\$259,000 - 370, 62503 Township Road, Lac La Biche County

MLS® #A2213222

\$259,000

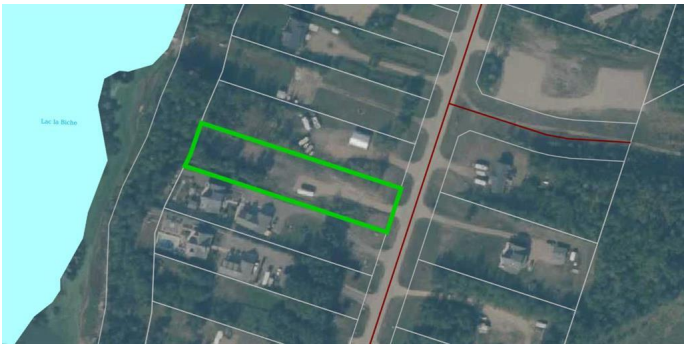
0 Bedroom, 0.00 Bathroom,
Land on 1.02 Acres

Mystic Beach, Lac La Biche County, Alberta

Welcome to your dream escape on the shores of stunning Lac La Biche Lake! This 1.02-acre parcel in the sought-after Mystic Beach subdivision offers the perfect blend of natural beauty and year-round convenience. Imagine waking up to the sound of waves and ending your day with unforgettable sunsets over the water.

Located just 20 minutes north of Lac La Biche, this property boasts sandy beaches, paved roads, and a family-friendly atmosphere complete with children's parks and scenic walking trails. Whether you're planning to build your year-round home or a seasonal getaway, this spacious lot gives you the space and setting to make your vision a reality.

With lakefront lots in high demand, don't miss your chance to own a piece of paradise in this vibrant lakeside community.



Essential Information

| | |
|-----------|------------------|
| MLS® # | A2213222 |
| Price | \$259,000 |
| Bathrooms | 0.00 |
| Acres | 1.02 |
| Type | Land |
| Sub-Type | Residential Land |

| | |
|--------|--------|
| Status | Active |
|--------|--------|

Community Information

| | |
|-------------|--------------------------|
| Address | 370, 62503 Township Road |
| Subdivision | Mystic Beach |
| City | Lac La Biche County |
| County | Lac La Biche County |
| Province | Alberta |
| Postal Code | t0A2C2 |

Additional Information

| | |
|----------------|---------------------|
| Date Listed | April 18th, 2025 |
| Days on Market | 63 |
| Zoning | Country Residential |

Listing Details

| | |
|----------------|------------------------|
| Listing Office | RE/MAX LA BICHE REALTY |
|----------------|------------------------|

Data is supplied by Pillar 9â„¢ MLSÂ® System. Pillar 9â„¢ is the owner of the copyright in its MLSÂ® System. Data is deemed reliable but is not guaranteed accurate by Pillar 9â„¢. The trademarks MLSÂ®, Multiple Listing ServiceÂ® and the associated logos are owned by The Canadian Real Estate Association (CREA) and identify the quality of services provided by real estate professionals who are members of CREA. Used under license.