

\$149,000 - 8 Township Road 122, Rural Forty Mile No. 8, County of

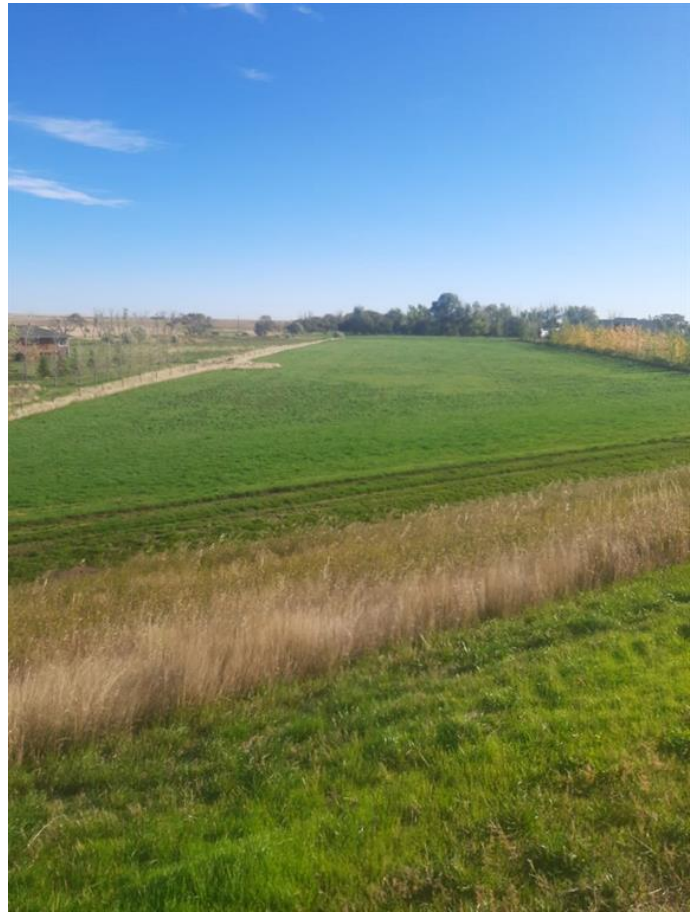
MLS® #A2213534

\$149,000

0 Bedroom, 0.00 Bathroom,
Land on 3.95 Acres

NONE, Rural Forty Mile No. 8, County of,
Alberta

Build your dream home near a lake! Fantastic opportunity to develop this 3.9 acre parcel which has power and gas to the lot line and is part of the water co-op. Lot is ready for development, sheltered by the dam, and is within walking distance to the lake! Located just past Golden Sheaf Park, a 20 minute drive from Medicine Hat. Imagine owning a little piece of paradise! Call to see it or for more details.



Essential Information

| | |
|-----------|------------------|
| MLS® # | A2213534 |
| Price | \$149,000 |
| Bathrooms | 0.00 |
| Acres | 3.95 |
| Type | Land |
| Sub-Type | Residential Land |
| Status | Active |

Community Information

| | |
|-------------|-----------------------------------|
| Address | 8 Township Road 122 |
| Subdivision | NONE |
| City | Rural Forty Mile No. 8, County of |
| County | Forty Mile No. 8, County of |
| Province | Alberta |
| Postal Code | T0K 1Z0 |

Amenities

Utilities Electricity at Lot Line, Natural Gas

Additional Information

Date Listed May 9th, 2025
Days on Market 82
Zoning CR

Listing Details

Listing Office RE/MAX MEDALTA REAL ESTATE



Data is supplied by Pillar 9â„¢ MLSÂ® System. Pillar 9â„¢ is the owner of the copyright in its MLSÂ® System. Data is deemed reliable but is not guaranteed accurate by Pillar 9â„¢. The trademarks MLSÂ®, Multiple Listing ServiceÂ® and the associated logos are owned by The Canadian Real Estate Association (CREA) and identify the quality of services provided by real estate professionals who are members of CREA. Used under license.

