

\$239,900 - 1017 6 Avenue, Beaverlodge

MLS® #A2213686

\$239,900

5 Bedroom, 3.00 Bathroom, 1,612 sqft

Residential on 0.23 Acres

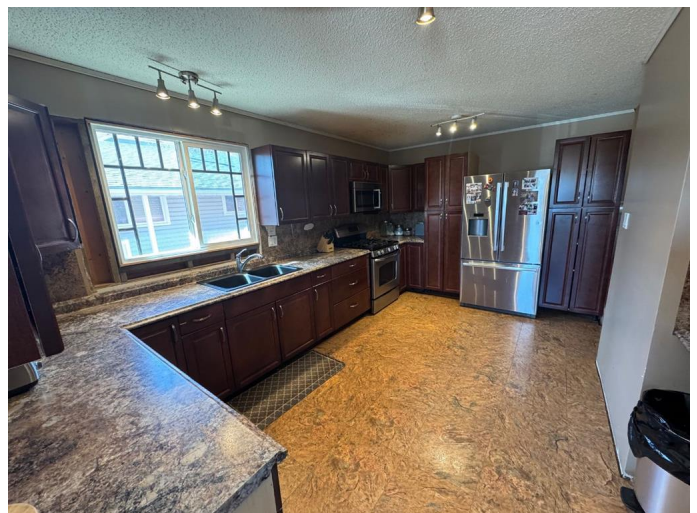
N/A, Beaverlodge, Alberta

Nice 4-level split home on a large, fenced lot in Beaverlodge! Featuring 5 bedrooms and 3 bathrooms, the home boasts a stylish kitchen with newer countertops, high-end appliances, and a gas stove. The bright dining area has garden doors to a raised front deck, and the spacious living room fits plenty of furniture. Upstairs includes the primary bedroom with walk-in closet and 3-piece ensuite, plus two more bedrooms and a full bath. The lower level offers a rec room with wood-burning fireplace, wet bar, French doors to a two-tiered deck, and built-in hot tub. The basement has two large bedrooms, storage, and laundry/furnace area. Extras include a heated attached garage, raised garden beds, front and rear gravel parking, and recent upgrades: shingles, siding, windows, furnace and hot water tank. Walking distance to schools, shopping, hospital, and fitness centre. Don't miss out—book your showing today!

Built in 1985

Essential Information

MLS® #	A2213686
Price	\$239,900
Bedrooms	5
Bathrooms	3.00
Full Baths	3
Square Footage	1,612



Acres	0.23
Year Built	1985
Type	Residential
Sub-Type	Detached
Style	4 Level Split
Status	Active

Community Information

Address	1017 6 Avenue
Subdivision	N/A
City	Beaverlodge
County	Grande Prairie No. 1, County of
Province	Alberta
Postal Code	T0H 0C0

Amenities

Parking Spaces	4
Parking	Single Garage Attached
# of Garages	1

Interior

Interior Features	See Remarks
Appliances	Dishwasher, Gas Stove, Refrigerator, Washer/Dryer
Heating	Forced Air
Cooling	None
Fireplace	Yes
# of Fireplaces	1
Fireplaces	Wood Burning
Has Basement	Yes
Basement	Finished, Full

Exterior

Exterior Features	Other
Lot Description	Back Yard
Roof	Asphalt Shingle
Construction	See Remarks
Foundation	Poured Concrete

Additional Information

Date Listed	April 22nd, 2025
Days on Market	8
Zoning	R2

Listing Details

Listing Office	Sutton Group Grande Prairie Professionals
----------------	---

Data is supplied by Pillar 9â„¢ MLSÂ® System. Pillar 9â„¢ is the owner of the copyright in its MLSÂ® System. Data is deemed reliable but is not guaranteed accurate by Pillar 9â„¢. The trademarks MLSÂ®, Multiple Listing ServiceÂ® and the associated logos are owned by The Canadian Real Estate Association (CREA) and identify the quality of services provided by real estate professionals who are members of CREA. Used under license.