

\$1,038,450 - 103, 1413 Mountain Avenue, Canmore

MLS® #A2214359

\$1,038,450

3 Bedroom, 3.00 Bathroom, 1,919 sqft
Residential on 0.00 Acres

Teepee Town, Canmore, Alberta

Need focus and flexibility in your day? This bright CORNER unit is built for remote professionals. With two primary suites, a third bedroom/den, and a private ground-level flex room with separate entry, youâ€™ll finally have space for an office, studio, or client-facing setupâ€”without sacrificing your living space.

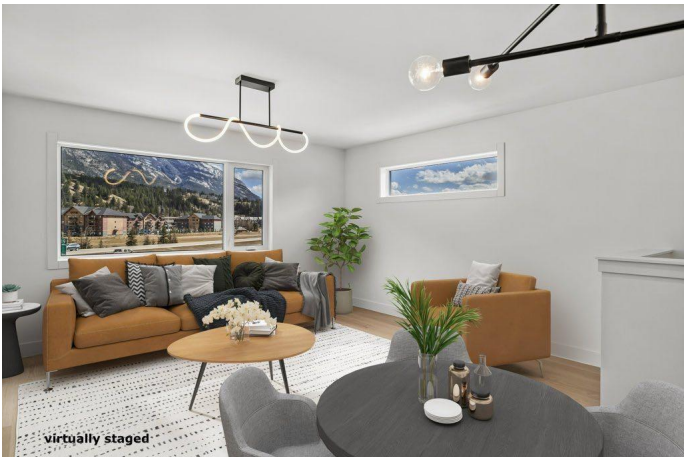
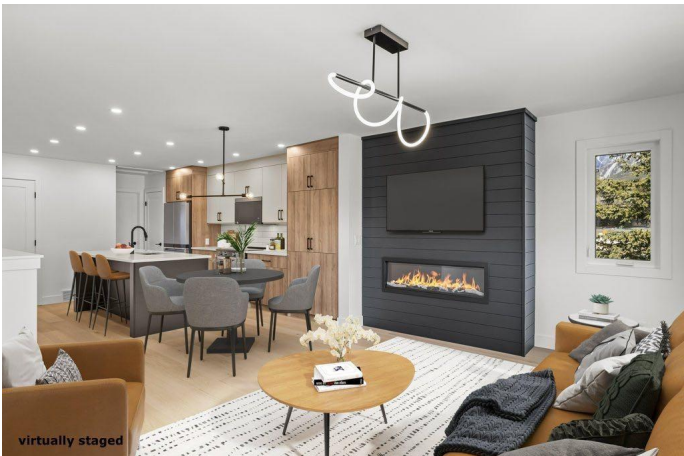
Enjoy mountain views, high-end finishes, and the ease of a brand-new buildâ€”no renos, just move in and get to work (or play).

Located in Canmoreâ€™s emerging downtown neighbourhood, close to shops, cafes, and trailsâ€”because work-life balance starts right outside your door. Top notch finishing and New Home Warranty included! Note: residential zoning, no short term rentals permitted.

Built in 2025

Essential Information

MLS® #	A2214359
Price	\$1,038,450
Bedrooms	3
Bathrooms	3.00
Full Baths	3
Square Footage	1,919
Acres	0.00
Year Built	2025



Type	Residential
Sub-Type	Row/Townhouse
Style	3 Storey
Status	Active

Community Information

Address	103, 1413 Mountain Avenue
Subdivision	Teepee Town
City	Canmore
County	Bighorn No. 8, M.D. of
Province	Alberta
Postal Code	T1W1M3

Amenities

Amenities	None
Parking Spaces	2
Parking	Single Garage Attached
# of Garages	1

Interior

Interior Features	Ceiling Fan(s), Closet Organizers, Kitchen Island, No Animal Home, No Smoking Home, Open Floorplan, Quartz Counters, Storage
Appliances	Dishwasher, Dryer, Gas Range, Microwave Hood Fan, Range, Refrigerator, Washer
Heating	Forced Air, Natural Gas
Cooling	None
Fireplace	Yes
# of Fireplaces	1
Fireplaces	Electric, Living Room
Basement	None

Exterior

Exterior Features	Balcony, Courtyard
Lot Description	Level, Low Maintenance Landscape, Views
Roof	Asphalt Shingle
Construction	Composite Siding, Stone
Foundation	Poured Concrete, Slab

Additional Information

Date Listed	April 24th, 2025
Days on Market	104
Zoning	Residential Multifamily

Listing Details

Listing Office	RE/MAX Alpine Realty
----------------	----------------------

Data is supplied by Pillar 9â„¢ MLS® System. Pillar 9â„¢ is the owner of the copyright in its MLS® System. Data is deemed reliable but is not guaranteed accurate by Pillar 9â„¢. The trademarks MLS®, Multiple Listing Service® and the associated logos are owned by The Canadian Real Estate Association (CREA) and identify the quality of services provided by real estate professionals who are members of CREA. Used under license.