

\$175,000 - 4, 70420 Range Road 245 Road, Rural Greenview No. 16, M.D. of

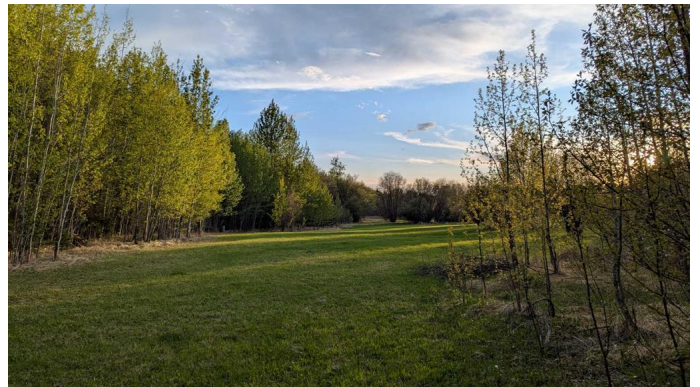
MLS® #A2214420

\$175,000

0 Bedroom, 0.00 Bathroom,
Land on 3.01 Acres

NONE, Rural Greenview No. 16, M.D. of,
Alberta

HUGE PRICE REDUCTION! Opportunity knocks! Looking for your own personal recreational getaway or the perfect spot to build your forever home? Located within minutes of Sturgeon Lake between Cosy Cove and The Narrows, this three plus acres parcel provides a lovely mixture of cleared grassed areas, large clusters of mature trees, and both flat and gently sloped areas. The new owner is sure to appreciate the added privacy from the environmental reserve that borders the property's south boundary and the thick stand of trees along the east and north boundaries. Do not miss this opportunity to own your own piece of paradise, where you will be able to make memories for years to come as you host family and friends camp outs and more. Call your favorite Realtor to view this property and start setting up a "home" so you can start enjoying summer at the Lake! Please DO NOT drive on the land.



Essential Information

MLS® #	A2214420
Price	\$175,000
Bathrooms	0.00
Acres	3.01

Type	Land
Sub-Type	Recreational
Status	Active

Community Information

Address	4, 70420 Range Road 245 Road
Subdivision	NONE
City	Rural Greenview No. 16, M.D. of
County	Greenview No. 16, M.D. of
Province	Alberta
Postal Code	T0H 0Y0

Amenities

Utilities	See Remarks
-----------	-------------

Exterior

Lot Description	Corners Marked, See Remarks
-----------------	-----------------------------

Additional Information

Date Listed	April 24th, 2025
Days on Market	112
Zoning	CR3

Listing Details

Listing Office	Century 21 Grande Prairie Realty Inc.
----------------	---------------------------------------

Data is supplied by Pillar 9â„¢ MLS® System. Pillar 9â„¢ is the owner of the copyright in its MLS® System. Data is deemed reliable but is not guaranteed accurate by Pillar 9â„¢. The trademarks MLS®, Multiple Listing Service® and the associated logos are owned by The Canadian Real Estate Association (CREA) and identify the quality of services provided by real estate professionals who are members of CREA. Used under license.