

# \$521,900 - 655 Keystone Chase W, Lethbridge

MLS® #A2214600

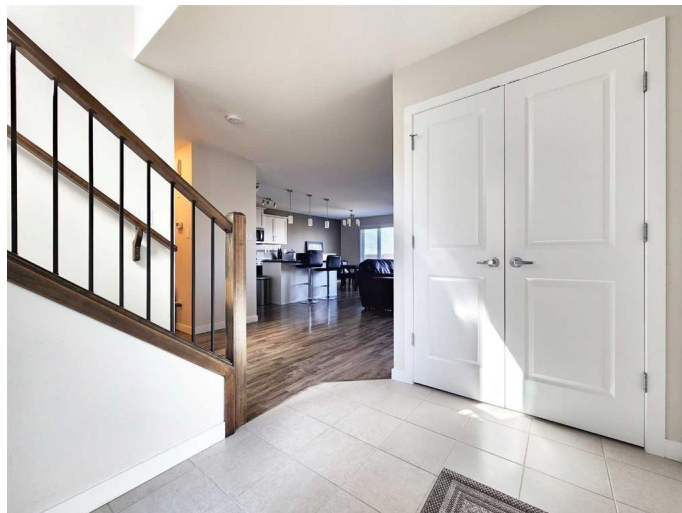
**\$521,900**

4 Bedroom, 4.00 Bathroom, 1,531 sqft

Residential on 0.10 Acres

Copperwood, Lethbridge, Alberta

Located in the tranquil neighborhood of Copperwood, this well-designed four-bedroom, four-bathroom family home offers a blend of comfort and functionality. The property features a keyless entry system, providing ease and security for all residents. Inside, the home is adorned with luxury vinyl plank flooring and modern paint, complemented by contemporary fixtures throughout. The heart of the home is the open concept kitchen, complete with stone countertops, a corner pantry, and sleek stainless steel appliances, including a glass cooktop. A large island provides breakfast bar seating, perfect for family gatherings or casual meals. From the kitchen dining area, step directly onto the back deck, which offers access to a spacious, fully fenced backyard with a tree and serene field views. The living room is a cozy retreat, featuring a gas fireplace, ideal for relaxing evenings. The main floor also includes a convenient 2pc bathroom and a laundry room. Upstairs, you'll find three well-sized bedrooms and a 4pc bathroom. The primary bedroom is your haven, boasting a large walk-in closet and a private 3pc ensuite. The basement extends the living space with an additional bedroom, a 4pc bathroom, and a large recreation room, equipped with an ample storage room. The home is completed by an attached double car garage, ensuring plenty of parking and additional storage space. Situated close to schools, the YMCA, green spaces, groceries, and all essential amenities, this



property provides a perfect balance of peaceful living and urban convenience

Built in 2014

### Essential Information

MLS® #	A2214600
Price	\$521,900
Bedrooms	4
Bathrooms	4.00
Full Baths	3
Half Baths	1
Square Footage	1,531
Acres	0.10
Year Built	2014
Type	Residential
Sub-Type	Detached
Style	2 Storey
Status	Active

### Community Information

Address	655 Keystone Chase W
Subdivision	Copperwood
City	Lethbridge
County	Lethbridge
Province	Alberta
Postal Code	T1J 4S7

### Amenities

Parking Spaces	4
Parking	Double Garage Attached, Off Street
# of Garages	2

### Interior

Interior Features	Breakfast Bar, Central Vacuum, Granite Counters, Kitchen Island, Walk-In Closet(s)
Appliances	See Remarks
Heating	Forced Air
Cooling	Central Air

Fireplace	Yes
# of Fireplaces	2
Fireplaces	Basement, Electric, Gas, Living Room
Has Basement	Yes
Basement	Finished, Full

### **Exterior**

Exterior Features	Private Yard
Lot Description	Landscaped, Underground Sprinklers
Roof	Asphalt Shingle
Construction	Vinyl Siding, Wood Frame
Foundation	Poured Concrete

### **Additional Information**

Date Listed	April 25th, 2025
Days on Market	5
Zoning	R-CL

### **Listing Details**

Listing Office	RE/MAX REAL ESTATE - LETHBRIDGE
----------------	---------------------------------

Data is supplied by Pillar 9â„¢ MLS® System. Pillar 9â„¢ is the owner of the copyright in its MLS® System. Data is deemed reliable but is not guaranteed accurate by Pillar 9â„¢. The trademarks MLS®, Multiple Listing Service® and the associated logos are owned by The Canadian Real Estate Association (CREA) and identify the quality of services provided by real estate professionals who are members of CREA. Used under license.