

# \$249,000 - 7, 714040 71 Range Rd, Rural Grande Prairie No. 1, County of

MLS® #A2215629

**\$249,000**

0 Bedroom, 0.00 Bathroom,  
Land on 5.46 Acres

N/A, Rural Grande Prairie No. 1, County of,  
Alberta

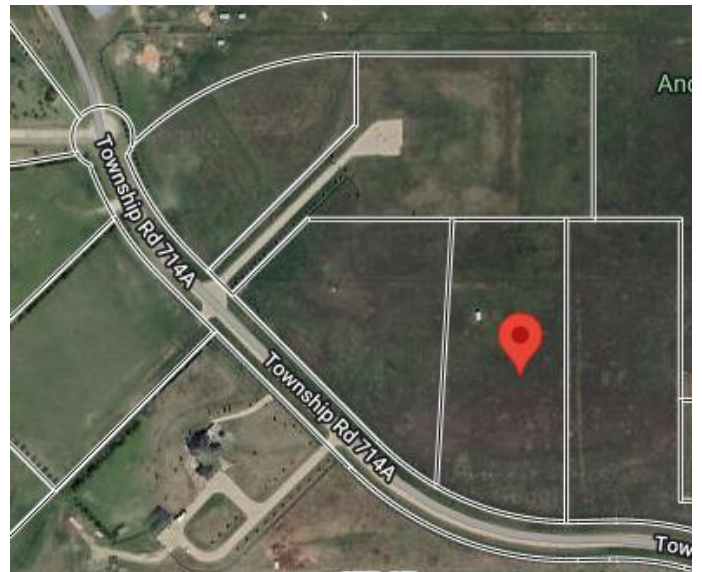
**VACANT LOT AND IMMEDIATE POSSESSION!!!** This 5.46 acre lot is ready to build on and zoned CR 5 country residential. Enjoy the convenience of being just minutes from Grande Prairie, where youâ€™ll find a variety of amenities to suit your lifestyle. With flexible options for build-to-suit and carrying options available, your vision can become a reality. Donâ€™t miss out on this incredible opportunity to invest in a community.

## Essential Information

MLS® #	A2215629
Price	\$249,000
Bathrooms	0.00
Acres	5.46
Type	Land
Sub-Type	Residential Land
Status	Active

## Community Information

Address	7, 714040 71 Range Rd
Subdivision	N/A
City	Rural Grande Prairie No. 1, County of
County	Grande Prairie No. 1, County of
Province	Alberta
Postal Code	T8W 5J5



**Additional Information**

Date Listed	April 28th, 2025
Days on Market	99
Zoning	CR 5

**Listing Details**

Listing Office	RE/MAX Grande Prairie
----------------	-----------------------

Data is supplied by Pillar 9â„¸ MLSÂ® System. Pillar 9â„¸ is the owner of the copyright in its MLSÂ® System. Data is deemed reliable but is not guaranteed accurate by Pillar 9â„¸. The trademarks MLSÂ®, Multiple Listing ServiceÂ® and the associated logos are owned by The Canadian Real Estate Association (CREA) and identify the quality of services provided by real estate professionals who are members of CREA. Used under license.