

\$119,900 - 90 Anson Avenue Sw, Medicine Hat

MLS® #A2217250

\$119,900

3 Bedroom, 2.00 Bathroom, 1,249 sqft

Residential on 0.15 Acres

SW Hill, Medicine Hat, Alberta

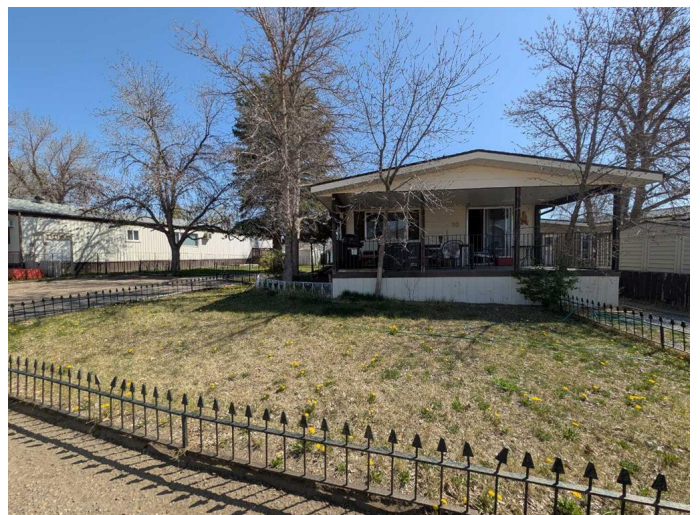
NO LOT FEES – YOU OWN THE LAND!

Welcome to this affordable home in Tower Estates offering 3 bedrooms and 2 full bathrooms. The layout features a functional floor plan with a spacious kitchen, complete with all appliances, flowing into a generous dining area. The primary bedroom includes a 3-piece ensuite, while two additional bedrooms, a 4-piece main bathroom, and a dedicated laundry area complete the interior. Enjoy summer evenings on the large 10x24 covered front porch. The yard is landscaped and includes two storage sheds for added convenience. Large parking pad offers off street parking. Property is being sold “AS IS, WHERE IS.”

Built in 1980

Essential Information

MLS® #	A2217250
Price	\$119,900
Bedrooms	3
Bathrooms	2.00
Full Baths	2
Square Footage	1,249
Acres	0.15
Year Built	1980
Type	Residential
Sub-Type	Detached
Style	Bungalow



Status	Active
--------	--------

Community Information

Address	90 Anson Avenue Sw
Subdivision	SW Hill
City	Medicine Hat
County	Medicine Hat
Province	Alberta
Postal Code	T1A 7Z9

Amenities

Parking Spaces	3
Parking	Parking Pad

Interior

Interior Features	See Remarks
Appliances	Dishwasher, Refrigerator, Stove(s), Washer/Dryer
Heating	Forced Air
Cooling	None
Basement	None

Exterior

Exterior Features	Storage
Lot Description	Landscaped
Roof	Asphalt Shingle
Construction	Aluminum Siding
Foundation	None

Additional Information

Date Listed	May 5th, 2025
Days on Market	1
Zoning	R-LD

Listing Details

Listing Office	ROYAL LEPAGE COMMUNITY REALTY
----------------	-------------------------------

Data is supplied by Pillar 9â„¢ MLS® System. Pillar 9â„¢ is the owner of the copyright in its MLS® System. Data is deemed reliable but is not guaranteed accurate by Pillar 9â„¢. The trademarks MLS®, Multiple Listing Service® and the associated logos are owned by The Canadian Real Estate Association (CREA) and identify the quality of services provided by real estate professionals who are members of CREA. Used under license.