

\$277,777 - 4723 22 Street, Lloydminster

MLS® #A2218257

\$277,777

4 Bedroom, 2.00 Bathroom, 991 sqft

Residential on 0.15 Acres

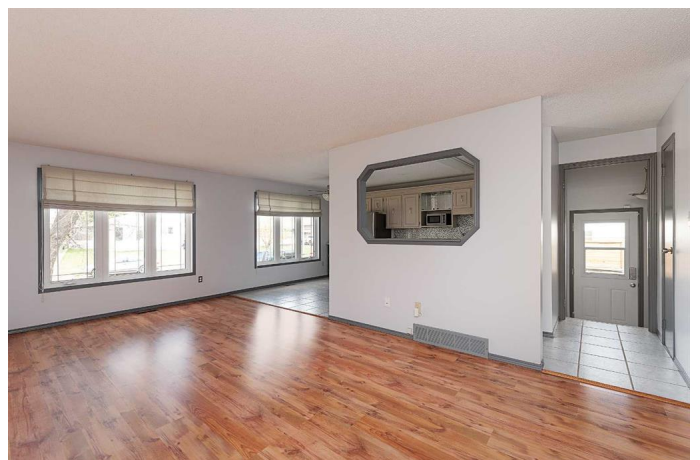
Wallacefield, Lloydminster, Saskatchewan

Welcome home! Nestled in a quiet, family-friendly neighborhood with great neighbors, this charming property offers the perfect blend of comfort, style, and convenience. Enjoy a mature, park-like backyard that's perfect for relaxing, entertaining, or letting the kids play freely. Step onto the beautiful privacy deck and unwind with a coffee or host summer barbecues in your own private oasis. The home boasts a large open kitchen – ideal for family gatherings and entertaining – along with a newly renovated bathroom featuring a luxurious soaker tub and rainshower for a spa-like experience. Additional highlights include a double-wide driveway for ample parking, new carpet in the basement for cozy living space, and a school bus pickup right at your doorstep – perfect for busy families. You'll love being close to local parks and green spaces, making outdoor adventures just a short walk away. Don't miss the opportunity to live in a truly wonderful home that has it all! Check out the 3D virtual Tour!

Built in 1980

Essential Information

MLS® #	A2218257
Price	\$277,777
Bedrooms	4
Bathrooms	2.00



Full Baths	2
Square Footage	991
Acres	0.15
Year Built	1980
Type	Residential
Sub-Type	Detached
Style	Bungalow
Status	Active

Community Information

Address	4723 22 Street
Subdivision	Wallacefield
City	Lloydminster
County	Lloydminster
Province	Saskatchewan
Postal Code	S9V 1L7

Amenities

Parking Spaces	2
Parking	Concrete Driveway, Off Street

Interior

Interior Features	Ceiling Fan(s), Laminate Counters, Soaking Tub, Storage
Appliances	Dishwasher, Microwave, Range Hood, Refrigerator, Stove(s), Washer/Dryer, Window Coverings
Heating	Forced Air, Natural Gas, Floor Furnace
Cooling	None
Has Basement	Yes
Basement	Finished, Full

Exterior

Exterior Features	Private Yard, Storage
Lot Description	Back Yard, City Lot, Front Yard, Lawn, Many Trees, Private, Rectangular Lot, Street Lighting
Roof	Asphalt Shingle
Construction	Vinyl Siding, Wood Frame
Foundation	Wood

Additional Information

Date Listed	May 6th, 2025
Days on Market	4
Zoning	R1

Listing Details

Listing Office CENTURY 21 DRIVE

Data is supplied by Pillar 9â„¢ MLSÂ® System. Pillar 9â„¢ is the owner of the copyright in its MLSÂ® System. Data is deemed reliable but is not guaranteed accurate by Pillar 9â„¢. The trademarks MLSÂ®, Multiple Listing ServiceÂ® and the associated logos are owned by The Canadian Real Estate Association (CREA) and identify the quality of services provided by real estate professionals who are members of CREA. Used under license.