

\$429,900 - 25 Neville Close, Red Deer

MLS® #A2220154

\$429,900

4 Bedroom, 3.00 Bathroom, 1,270 sqft

Residential on 0.15 Acres

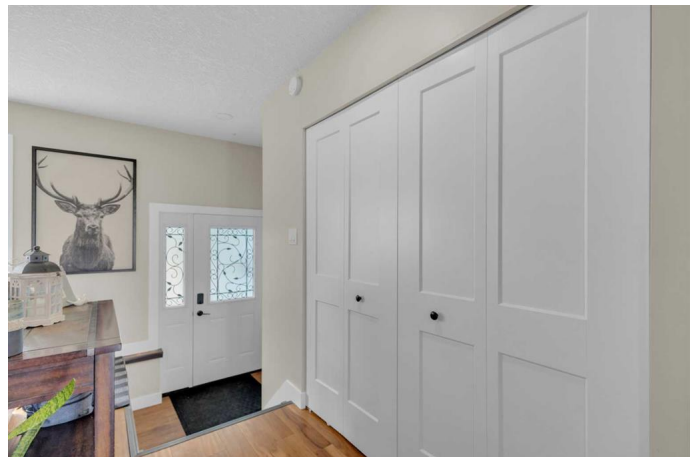
Normandeau, Red Deer, Alberta

FULLY DEVELOPED 4 BEDROOM, 2.5 BATHROOMS 3 LEVEL SPLIT IN NORMANDEAU, Red Deer. Welcome to 25 Neville Close, one of the most desirable closes, facing a green space and offering quick access to Hwy 2, making it a great fit for families or commuters. Inside, the open-concept main level offers a bright living room that flows into the kitchen and dining area. Upstairs, youâ€™ll find three bedrooms, including a spacious primary with ensuite. The lower level features a large family room, a fourth bedroom, and a laundry area. Outside, enjoy a generous backyard with a deck that's perfect for relaxing or hosting. With an attached double garage, mature trees, and quite close proximity to schools, shopping, and transit.

Built in 1978

Essential Information

MLS® #	A2220154
Price	\$429,900
Bedrooms	4
Bathrooms	3.00
Full Baths	2
Half Baths	1
Square Footage	1,270
Acres	0.15



Year Built	1978
Type	Residential
Sub-Type	Detached
Style	3 Level Split
Status	Active

Community Information

Address	25 Neville Close
Subdivision	Normandeau
City	Red Deer
County	Red Deer
Province	Alberta
Postal Code	T4P1T8

Amenities

Parking Spaces	4
Parking	Double Garage Attached
# of Garages	2

Interior

Interior Features	Open Floorplan
Appliances	Dishwasher, Dryer, Refrigerator, Stove(s), Washer
Heating	Forced Air, Natural Gas
Cooling	None
Has Basement	Yes
Basement	Finished, Full

Exterior

Exterior Features	Private Yard
Lot Description	Back Lane, Back Yard
Roof	Asphalt Shingle
Construction	Other
Foundation	Poured Concrete

Additional Information

Date Listed	May 10th, 2025
Days on Market	5
Zoning	R1

Listing Details

Listing Office

Coldwell Banker Ontrack Realty

Data is supplied by Pillar 9â„¢ MLSÂ® System. Pillar 9â„¢ is the owner of the copyright in its MLSÂ® System. Data is deemed reliable but is not guaranteed accurate by Pillar 9â„¢. The trademarks MLSÂ®, Multiple Listing ServiceÂ® and the associated logos are owned by The Canadian Real Estate Association (CREA) and identify the quality of services provided by real estate professionals who are members of CREA. Used under license.