

\$699,999 - 315 Wolf Creek Way Se, Calgary

MLS® #A2220594

\$699,999

4 Bedroom, 4.00 Bathroom, 1,616 sqft
Residential on 0.07 Acres

Wolf Willow, Calgary, Alberta

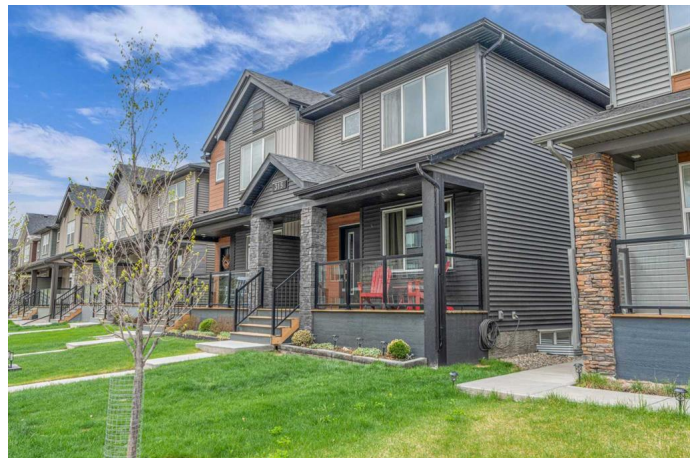
Built by Shane Homes as a thoughtfully designed spec home, this beautifully upgraded 4-bedroom, 3.5-bath property offers the perfect blend of modern finishes, smart technology, and private outdoor space in the heart of Wolf Willow.

Step into an airy main floor with 9'™ ceilings, upgraded black hardware, and a stunning kitchen complete with premium appliances and sleek finishes—ideal for everyday living and entertaining alike. The second level features three spacious bedrooms, a versatile bonus room, including a primary suite with a walk-in closet and 3-piece ensuite, along with a conveniently located stacked washer/dryer and a full 4-piece bath.

The recently completed basement (completed with permits) adds a large fourth bedroom with its own walk-in closet, a 4-piece bathroom, and a spacious recreation area—perfect for guests, older children, or a cozy media zone.

This smart home includes central air conditioning and a water softener for year-round comfort. Outside, enjoy a fully fenced and landscaped yard leading to a 20' x 24' detached garage with 8'™ overhead door, insulation, 30-amp service, and upgraded 60-amp cable—ideal for EV charging or workshop use.

Backing onto a permanently closed road and



city-owned land that will never be developed, this home offers unique backyard privacy in one of Calgary’s fastest-growing communities.

Located near the Bow River, Fish Creek Park, and new commercial amenities, this move-in ready home is your chance to experience the best of Wolf Willow living.

Schedule your private showing today!

Built in 2022

Essential Information

| | |
|----------------|------------------------|
| MLS® # | A2220594 |
| Price | \$699,999 |
| Bedrooms | 4 |
| Bathrooms | 4.00 |
| Full Baths | 3 |
| Half Baths | 1 |
| Square Footage | 1,616 |
| Acres | 0.07 |
| Year Built | 2022 |
| Type | Residential |
| Sub-Type | Semi Detached |
| Style | 2 Storey, Side by Side |
| Status | Active |

Community Information

| | |
|-------------|-----------------------|
| Address | 315 Wolf Creek Way Se |
| Subdivision | Wolf Willow |
| City | Calgary |
| County | Calgary |
| Province | Alberta |
| Postal Code | T2X4Y8 |

Amenities

| | |
|----------------|------------------------|
| Parking Spaces | 1 |
| Parking | Double Garage Detached |

of Garages 2

Interior

Interior Features High Ceilings, Kitchen Island, Open Floorplan, Pantry, Smart Home, Walk-In Closet(s)

Appliances Dishwasher, Induction Cooktop, Microwave, Microwave Hood Fan, Refrigerator, Wall/Window Air Conditioner, Washer/Dryer, Window Coverings

Heating Forced Air, Natural Gas

Cooling Central Air

Has Basement Yes

Basement Finished, Full

Exterior

Exterior Features None

Lot Description Back Lane, Landscaped

Roof Asphalt Shingle

Construction Concrete, Vinyl Siding

Foundation Poured Concrete

Additional Information

Date Listed May 16th, 2025

Days on Market 36

Zoning R-Gm

Listing Details

Listing Office RE/MAX First

Data is supplied by Pillar 9â„¢ MLSÂ® System. Pillar 9â„¢ is the owner of the copyright in its MLSÂ® System. Data is deemed reliable but is not guaranteed accurate by Pillar 9â„¢. The trademarks MLSÂ®, Multiple Listing ServiceÂ® and the associated logos are owned by The Canadian Real Estate Association (CREA) and identify the quality of services provided by real estate professionals who are members of CREA. Used under license.