

\$79,900 - 36, 421057 Range Road 284, Rural Ponoka County

MLS® #A2221882

\$79,900

0 Bedroom, 0.00 Bathroom,
Land on 2.35 Acres

Skyview Pointe, Rural Ponoka County, Alberta

Discover the perfect blend of space, views, and convenience with this 2.35-acre lot, one of the largest in the subdivision! Nestled near Gull Lake, this property offers breathtaking lake views and a prime location just 2 minutes from a public boat launch, making it an ideal spot for water enthusiasts.

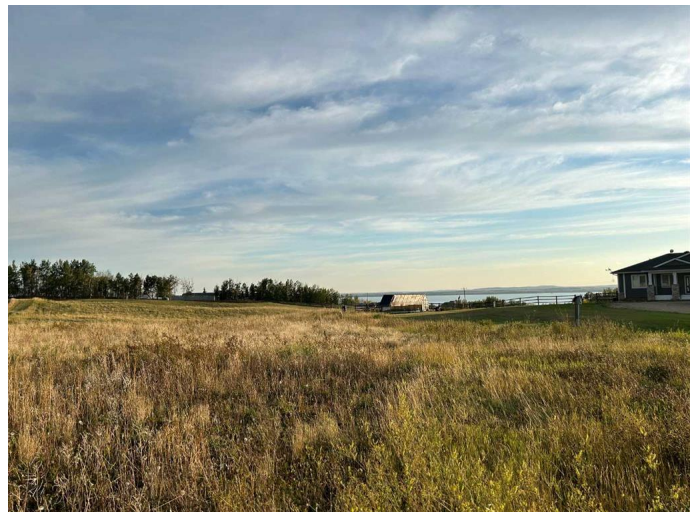
With building restrictions in place, you can be sure of a well-maintained and thoughtfully planned community, while the absence of time restrictions allows you to build at your own pace. Located within easy reach of Lacombe, Bentley, Rimbey, and Red Deer, this property offers both seclusion and accessibility.

Whether you're looking to create a year-round residence or a weekend retreat, this exceptional piece of land provides the space, scenery, and freedom to bring your vision to life!

Essential Information

MLS® #	A2221882
Price	\$79,900
Bathrooms	0.00
Acres	2.35
Type	Land
Sub-Type	Residential Land
Status	Active

Community Information



Address	36, 421057 Range Road 284
Subdivision	Skyview Pointe
City	Rural Ponoka County
County	Ponoka County
Province	Alberta
Postal Code	T0C 2J0

Exterior

Lot Description	Irregular Lot, Lake
-----------------	---------------------

Additional Information

Date Listed	May 14th, 2025
Days on Market	81
Zoning	CR

Listing Details

Listing Office	eXp Realty
----------------	------------

Data is supplied by Pillar 9â„¸ MLSÂ® System. Pillar 9â„¸ is the owner of the copyright in its MLSÂ® System. Data is deemed reliable but is not guaranteed accurate by Pillar 9â„¸. The trademarks MLSÂ®, Multiple Listing ServiceÂ® and the associated logos are owned by The Canadian Real Estate Association (CREA) and identify the quality of services provided by real estate professionals who are members of CREA. Used under license.