

\$289,000 - 4612 20 Street, Lloydminster

MLS® #A2224605

\$289,000

3 Bedroom, 1.00 Bathroom, 985 sqft

Residential on 0.11 Acres

Wallacefield, Lloydminster, Saskatchewan

Welcome to this quality-built three-bedroom home located on a quiet street in Lloydminster.

If you're looking for a solid home and the chance to finish off a basement and build some equity in a property, this is the home for you. All the hard work, including the deck and fence has been completed for you. Add this one to your list to view. Check out the 3D virtual tour!

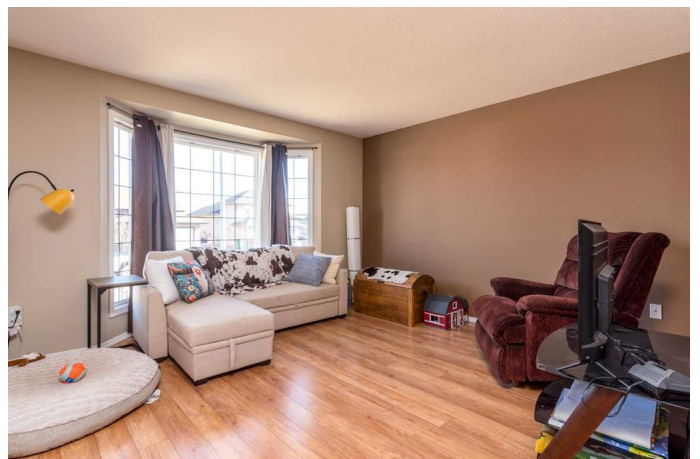
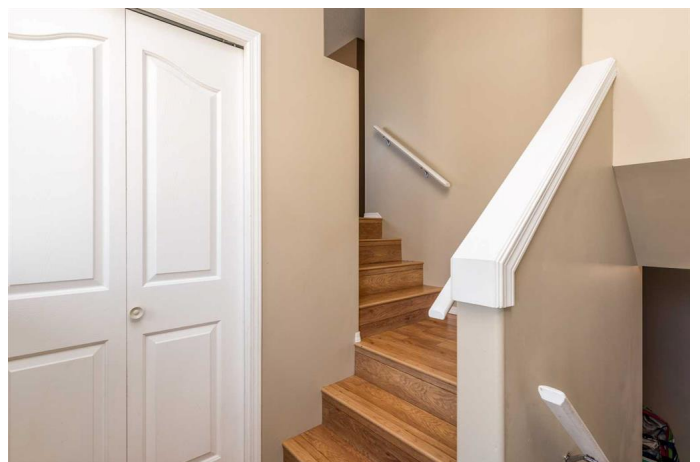
Built in 2007

Essential Information

MLS® #	A2224605
Price	\$289,000
Bedrooms	3
Bathrooms	1.00
Full Baths	1
Square Footage	985
Acres	0.11
Year Built	2007
Type	Residential
Sub-Type	Detached
Style	Bi-Level
Status	Active

Community Information

Address	4612 20 Street
Subdivision	Wallacefield
City	Lloydminster



County	Lloydminster
Province	Saskatchewan
Postal Code	S9V 0Z6

Amenities

Parking Spaces	2
Parking	Concrete Driveway, Off Street

Interior

Interior Features	Storage
Appliances	Dishwasher, Range Hood, Refrigerator, Stove(s), Washer/Dryer, Window Coverings
Heating	Floor Furnace, Forced Air, Natural Gas
Cooling	None
Has Basement	Yes
Basement	Full, Unfinished

Exterior

Exterior Features	None
Lot Description	Back Yard, City Lot, Few Trees, Front Yard, Lawn, Rectangular Lot
Roof	Asphalt Shingle
Construction	Vinyl Siding, Wood Frame
Foundation	Wood

Additional Information

Date Listed	May 27th, 2025
Days on Market	24
Zoning	R1

Listing Details

Listing Office	CENTURY 21 DRIVE
----------------	------------------

Data is supplied by Pillar 9â„¢ MLSÂ® System. Pillar 9â„¢ is the owner of the copyright in its MLSÂ® System. Data is deemed reliable but is not guaranteed accurate by Pillar 9â„¢. The trademarks MLSÂ®, Multiple Listing ServiceÂ® and the associated logos are owned by The Canadian Real Estate Association (CREA) and identify the quality of services provided by real estate professionals who are members of CREA. Used under license.