

# \$849,900 - 27, 26110 11 Highway, Rural Red Deer County

---

MLS® #A2227058

**\$849,900**

3 Bedroom, 3.00 Bathroom, 1,616 sqft  
Residential on 2.02 Acres

Meadow Ridge, Rural Red Deer County,  
Alberta

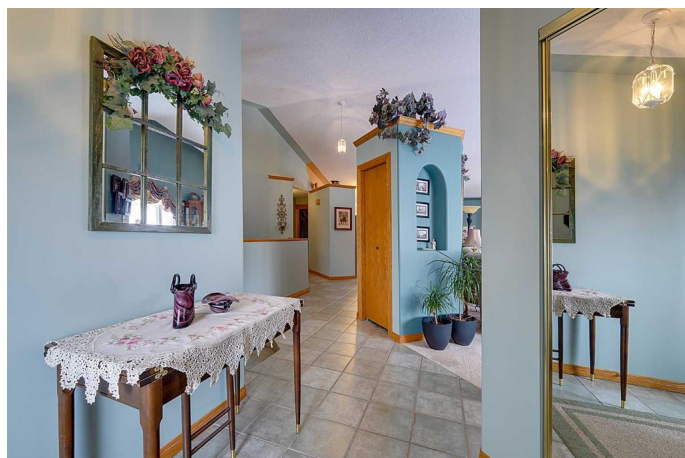
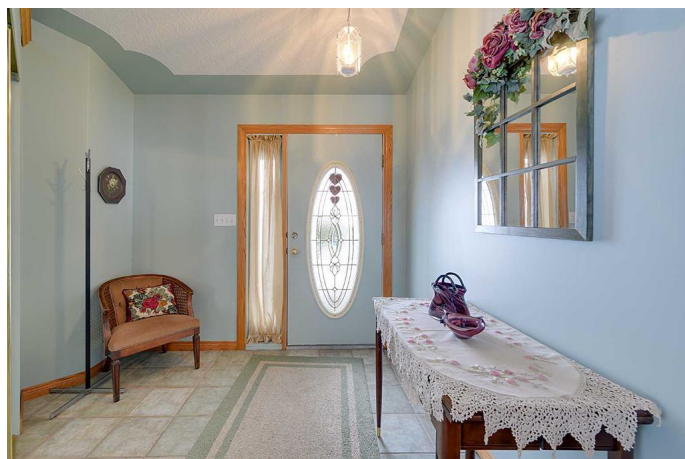
Stunning Acreage with Breathtaking River  
Valley Views – Just 7 Minutes from Red  
Deer!

If you're looking for an acreage with a  
spectacular view of the Red Deer River Valley,  
this is it! This fully developed 1,600 sq. ft.  
bungalow offers the perfect blend of comfort,  
elegance, and space.

Step onto the charming front veranda and take  
in the breathtaking scenery, or relax on the  
expansive two-tiered, treated deck – perfect  
for enjoying the peaceful surroundings. Inside,  
the vaulted ceilings in the living and dining  
rooms create an airy, open feel, while the  
kitchen boasts beautiful granite countertops  
and ample workspace.

Convenience is key with main floor laundry, a  
spacious primary suite featuring a 3-piece  
ensuite, and a second generously sized  
bedroom. The warmth of in-floor heating runs  
throughout the entire home, ensuring even,  
cozy temperatures year-round.

The fully developed basement is an  
entertainer's dream, offering a massive  
family/games room with a fireplace – ideal for  
gatherings. You'll also find an additional large  
bedroom and a 3-piece bath, providing plenty



of space for guests or family members.

This incredible acreage combines tranquility, luxury, and convenienceâ€”all just minutes from the city. Donâ€™t miss your chance to own this beautiful property!

Built in 1998

**Essential Information**

|                |                                  |
|----------------|----------------------------------|
| MLS® #         | A2227058                         |
| Price          | \$849,900                        |
| Bedrooms       | 3                                |
| Bathrooms      | 3.00                             |
| Full Baths     | 3                                |
| Square Footage | 1,616                            |
| Acres          | 2.02                             |
| Year Built     | 1998                             |
| Type           | Residential                      |
| Sub-Type       | Detached                         |
| Style          | Acreage with Residence, Bungalow |
| Status         | Active                           |

**Community Information**

|             |                       |
|-------------|-----------------------|
| Address     | 27, 26110 11 Highway  |
| Subdivision | Meadow Ridge          |
| City        | Rural Red Deer County |
| County      | Red Deer County       |
| Province    | Alberta               |
| Postal Code | T4E1C2                |

**Amenities**

|              |                                       |
|--------------|---------------------------------------|
| Parking      | Double Garage Attached, Heated Garage |
| # of Garages | 2                                     |

**Interior**

|                   |                  |
|-------------------|------------------|
| Interior Features | Granite Counters |
| Appliances        | Dishwasher       |
| Heating           | Hot Water        |

|                 |                               |
|-----------------|-------------------------------|
| Cooling         | None                          |
| Fireplace       | Yes                           |
| # of Fireplaces | 2                             |
| Fireplaces      | Family Room, Gas, Living Room |
| Has Basement    | Yes                           |
| Basement        | Finished, Full                |

## Exterior

|                   |   |
|-------------------|---|
| Exterior Features | Private Yard                                      |
| Lot Description   | Cul-De-Sac, Few Trees, Gentle Sloping, Landscaped |
| Roof              | Asphalt Shingle                                   |
| Construction      | Mixed   |
| Foundation        | Poured Concrete                                   |

## Additional Information

|                |                |
|----------------|----------------|
| Date Listed    | May 31st, 2025 |
| Days on Market | 64             |
| Zoning         | CR             |

## Listing Details

|                |                                   |
|----------------|-----------------------------------|
| Listing Office | Royal LePage Network Realty Corp. |
|----------------|-----------------------------------|

Data is supplied by Pillar 9â„¢ MLSÂ® System. Pillar 9â„¢ is the owner of the copyright in its MLSÂ® System. Data is deemed reliable but is not guaranteed accurate by Pillar 9â„¢. The trademarks MLSÂ®, Multiple Listing ServiceÂ® and the associated logos are owned by The Canadian Real Estate Association (CREA) and identify the quality of services provided by real estate professionals who are members of CREA. Used under license.