

# \$879,000 - 28114 Highway 11 A, Rural Red Deer County

MLS® #A2228890

**\$879,000**

4 Bedroom, 3.00 Bathroom, 1,250 sqft  
Residential on 2.00 Acres

NONE, Rural Red Deer County, Alberta

Discover peaceful country living with city convenience at this beautifully maintained acreage, just 7 minutes from Red Deer and 10 minutes from Sylvan Lake. Nestled on a private 2-acre lot, this 2009-built Labon Home offers the perfect blend of comfort, space, and functionality.

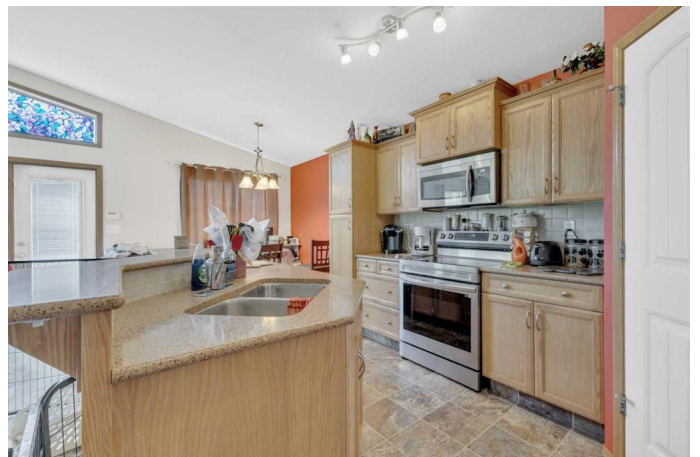
The property is gated with a solar-powered entry and features a paved driveway leading to an oversized heated double attached garage. Inside, you'll find 4 bedrooms and 2.5 bathrooms, including a spacious primary suite with a walk-in closet and stunning bay window that brings in natural light and views of the surrounding greenery.

The heart of the home is the kitchen, complete with quartz countertops, ideal for both everyday living and entertaining. Heated floors in both the basement and garage ensure comfort year-round.

A true standout feature is the massive 100' x 60' shop, offering endless possibilities for storage, hobbies, or a home-based business. Additional outdoor features include a firepit area, covered gazebo with power, and a powered woodshed—perfect for enjoying summer nights.

Recent upgrades include on-demand heat, a 5-year-old hot water heater, and shingles replaced just 7 years ago. The property is serviced by a well with a new pump, a septic tank (2009), and a field system (1993), located on the front right corner.

Fruit trees add charm and rural character to



the fully usable lotâ€”ideal for families, hobbyists, or those looking to enjoy the peace and privacy of acreage living with proximity to city amenities.

Donâ€™t miss your chance to own this exceptional acreage with unmatched shop space and country charm.

Built in 2009

### Essential Information

MLS® #	A2228890
Price	\$879,000
Bedrooms	4
Bathrooms	3.00
Full Baths	2
Half Baths	1
Square Footage	1,250
Acres	2.00
Year Built	2009
Type	Residential
Sub-Type	Detached
Style	Acreage with Residence, Bi-Level
Status	Active

### Community Information

Address	28114 Highway 11 A
Subdivision	NONE
City	Rural Red Deer County
County	Red Deer County
Province	Alberta
Postal Code	T4E 0S6

### Amenities

Utilities	Electricity Connected, Cable Available, Natural Gas Connected
Parking	Double Garage Attached, Driveway, Electric Gate, Heated Garage, Oversized, Garage Faces Front, Paved
# of Garages	2

## Interior

Interior Features	Kitchen Island, Open Floorplan, Pantry, Storage
Appliances	Garage Control(s), Microwave, Refrigerator, Stove(s), Washer/Dryer, Window Coverings
Heating	Forced Air, Natural Gas
Cooling	None
Has Basement	Yes
Basement	Finished, Full

## Exterior

Exterior Features	Fire Pit, Storage
Lot Description	Cleared, Fruit Trees/Shrub(s)
Roof	Asphalt Shingle
Construction	Vinyl Siding
Foundation	Poured Concrete

## Additional Information

Date Listed	June 7th, 2025
Days on Market	149
Zoning	AG

## Listing Details

Listing Office	RE/MAX real estate central alberta
----------------	------------------------------------

Data is supplied by Pillar 9â„¢ MLSÂ® System. Pillar 9â„¢ is the owner of the copyright in its MLSÂ® System. Data is deemed reliable but is not guaranteed accurate by Pillar 9â„¢. The trademarks MLSÂ®, Multiple Listing ServiceÂ® and the associated logos are owned by The Canadian Real Estate Association (CREA) and identify the quality of services provided by real estate professionals who are members of CREA. Used under license.