

\$1,049,900 - 41 Strathridge Crescent Sw, Calgary

MLS® #A2230058

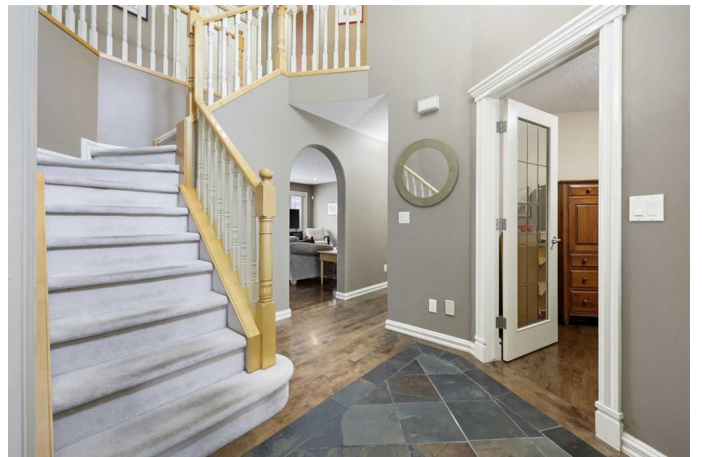
\$1,049,900

4 Bedroom, 4.00 Bathroom, 2,108 sqft

Residential on 0.12 Acres

Strathcona Park, Calgary, Alberta

Nestled in a quiet cul-de-sac in the sought-after community of Strathcona Park, this beautifully updated two-storey home offers comfort, style, and functionality for modern family living. Boasting over 2000 sqft of living space, this air-conditioned home features 4 bedrooms, 3 bathrooms, a main-floor office, and a fully developed basement—perfect for growing families or those needing extra space. As you step inside, you're greeted by a bright and inviting flex room with elegant French doors, ideal for use as a formal dining room, sitting area, or even a playroom. The heart of the home is the stunning, upgraded kitchen, complete with a center island, breakfast bar, granite countertops, designer tile backsplash, and high-end stainless steel appliances. A second sink and built-in bar fridge make entertaining a breeze, while the spacious seating area and family room offer the perfect place to gather, complete with a cozy gas fireplace with slate accents. French doors lead to a large west-facing deck with glass panel railings, a gas line for easy BBQing, and a private, beautifully landscaped backyard—ideal for summer gatherings or simply unwinding after a long day. A stylish 2-piece powder room and a convenient main-floor laundry room complete this level. Upstairs, you'll find a generous primary bedroom with a walk-in closet and a luxurious 4-piece ensuite, featuring a jetted soaker tub and a separate shower—a perfect retreat at the end of the day. Two spacious secondary



bedrooms and a well-appointed full bathroom complete the upper level. The fully developed basement offers even more living space, including a huge recreation and great room with a second gas fireplace, a fourth bedroom, and a versatile workshop area—perfect for hobbies, crafts, or additional storage. Additional features include a newer furnace, basement and the main level are wired for entertainment, a double attached garage, and a prime location within walking distance to top-rated schools, transit, parks, and everyday amenities. With its quiet location, functional layout, and impressive upgrades, this is an exceptional family home that offers unbeatable value. Don't miss your chance to make it yours!

Built in 1997

Essential Information

MLS® #	A2230058
Price	\$1,049,900
Bedrooms	4
Bathrooms	4.00
Full Baths	2
Half Baths	2
Square Footage	2,108
Acres	0.12
Year Built	1997
Type	Residential
Sub-Type	Detached
Style	2 Storey
Status	Active

Community Information

Address	41 Strathridge Crescent Sw
Subdivision	Strathcona Park
City	Calgary
County	Calgary

Province Alberta
Postal Code T3H 3R9

Amenities

Parking Spaces 2
Parking Concrete Driveway, Double Garage Attached, Driveway, Garage Door Opener, Insulated
of Garages 2

Interior

Interior Features Breakfast Bar, Ceiling Fan(s), Closet Organizers, Granite Counters, Jetted Tub, Kitchen Island, No Smoking Home, Walk-In Closet(s)
Appliances Bar Fridge, Dishwasher, Dryer, Garage Control(s), Microwave, Refrigerator, Stove(s), Washer, Window Coverings
Heating Fireplace(s), Forced Air, Natural Gas
Cooling Central Air
Fireplace Yes
of Fireplaces 2
Fireplaces Basement, Family Room, Gas
Has Basement Yes
Basement Finished, Full

Exterior

Exterior Features Other
Lot Description Back Yard, Cul-De-Sac, Front Yard, Landscaped, Many Trees, Paved, Street Lighting
Roof Asphalt Shingle
Construction Stone, Stucco, Wood Frame
Foundation Poured Concrete

Additional Information

Date Listed June 12th, 2025
Days on Market 4
Zoning R-G

Listing Details

Listing Office Greater Property Group

Data is supplied by Pillar 9â„¢ MLSÂ® System. Pillar 9â„¢ is the owner of the copyright in its MLSÂ® System. Data is deemed reliable but is not guaranteed accurate by Pillar 9â„¢. The trademarks MLSÂ®, Multiple Listing ServiceÂ® and the associated logos are owned by The Canadian Real Estate Association (CREA) and identify the quality of services

provided by real estate professionals who are members of CREA. Used under license.