

\$961,520 - 241043 Range Road 240, Rural Wheatland County

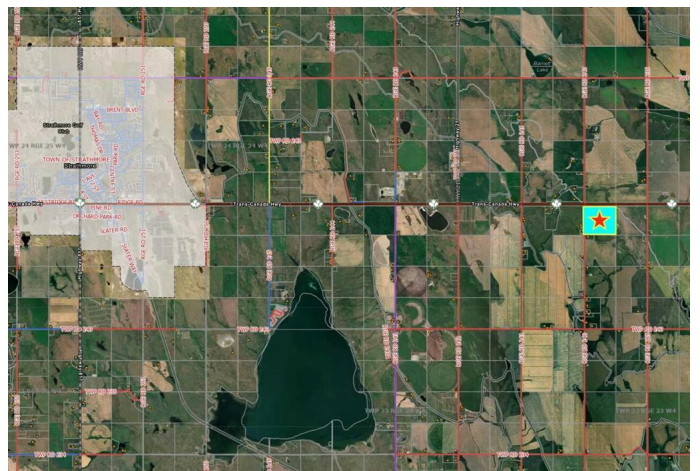
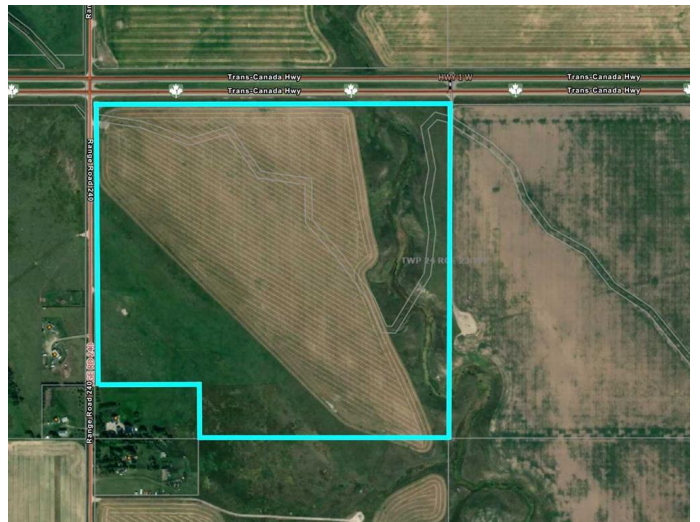
MLS® #A2231847

\$961,520

0 Bedroom, 0.00 Bathroom,
Land on 137.36 Acres

NONE, Rural Wheatland County, Alberta

Ideally situated just East of Booming Strathmore, this 137 (+-)Acres is positioned on the South East Corner of the Trans Canada Highway #1 and Range Road 240 within Wheatland County. Expand your agricultural & holding portfolio with passive surface lease income, or explore future development opportunities. A short drive to Strathmore offers access to all services like schools, healthcare, shopping, and recreation. Zoned AG Agricultural General, Wheatland County's land use bylaw allows for a multitude of permitted and discretionary uses on this parcel.



Essential Information

MLS® #	A2231847
Price	\$961,520
Bathrooms	0.00
Acres	137.36
Type	Land
Sub-Type	Commercial Land
Status	Active

Community Information

Address	241043 Range Road 240
Subdivision	NONE
City	Rural Wheatland County

County	Wheatland County
Province	Alberta
Postal Code	T1P 2B6

Additional Information

Date Listed	July 4th, 2025
Days on Market	1
Zoning	1

Listing Details

Listing Office	eXp Realty
----------------	------------

Data is supplied by Pillar 9â„¢ MLSÂ® System. Pillar 9â„¢ is the owner of the copyright in its MLSÂ® System. Data is deemed reliable but is not guaranteed accurate by Pillar 9â„¢. The trademarks MLSÂ®, Multiple Listing ServiceÂ® and the associated logos are owned by The Canadian Real Estate Association (CREA) and identify the quality of services provided by real estate professionals who are members of CREA. Used under license.