

\$149,900 - 2116, 7201 Poplar Drive, Grande Prairie

MLS® #A2237524

\$149,900

2 Bedroom, 1.00 Bathroom, 943 sqft

Residential on 0.00 Acres

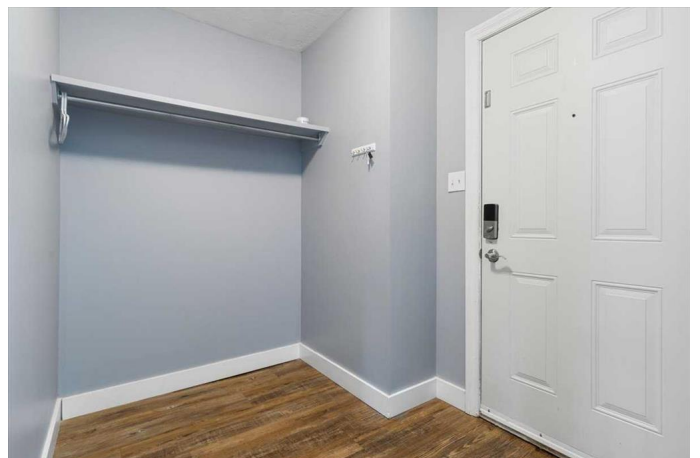
South Patterson Place, Grande Prairie, Alberta

Corner Unit in Haywood Court â€“ Freshly Updated & Move-In Ready! Discover comfort and convenience in this bright and spacious corner unit. This well-maintained 2 bedroom, 1 bathroom, two-level home is perfect for first-time buyers, downsizers, or investors. The main floor features brand new vinyl plank flooring, fresh paint throughout, and a functional kitchen with white cabinetry and a large walk-in pantry for all your storage needs. Upstairs you'll find convenient in-suite laundry, two generous bedrooms, and a bathroom with a tiled tub/shower combo. Enjoy your assigned parking stall right beside the unit, plus the added bonus of exterior storage. Located close to schools, shopping, and public transit, this property offers great value and quick possession! Donâ€™t miss outâ€”book your showing today!

Built in 1981

Essential Information

MLS® #	A2237524
Price	\$149,900
Bedrooms	2
Bathrooms	1.00
Full Baths	1
Square Footage	943
Acres	0.00
Year Built	1981



Type	Residential
Sub-Type	Apartment
Style	Multi Level Unit
Status	Active

Community Information

Address	2116, 7201 Poplar Drive
Subdivision	South Patterson Place
City	Grande Prairie
County	Grande Prairie
Province	Alberta
Postal Code	T8V 6C5

Amenities

Amenities	None
Parking Spaces	1
Parking	Stall

Interior

Interior Features	See Remarks
Appliances	Dishwasher, Electric Stove, Refrigerator, Washer/Dryer
Heating	Boiler
Cooling	None
# of Stories	3

Exterior

Exterior Features	None
Roof	Asphalt Shingle
Construction	Other

Additional Information

Date Listed	July 7th, 2025
Days on Market	1
Zoning	RM

Listing Details

Listing Office	Sutton Group Grande Prairie Professionals
----------------	---

Data is supplied by Pillar 9â„¢ MLSÂ® System. Pillar 9â„¢ is the owner of the copyright in its MLSÂ® System. Data is deemed reliable but is not guaranteed accurate by Pillar 9â„¢. The trademarks MLSÂ®, Multiple Listing ServiceÂ® and the associated logos are owned by The Canadian Real Estate Association (CREA) and identify the quality of services

provided by real estate professionals who are members of CREA. Used under license.