

\$1,650,000 - 142 Township Range Rd. 225 Township, Rural Vulcan County

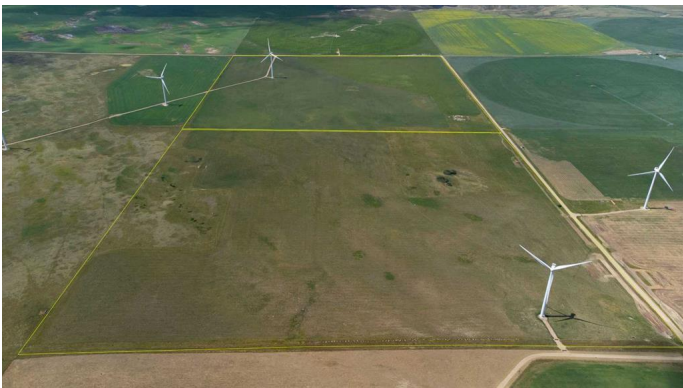
MLS® #A2237686

\$1,650,000

0 Bedroom, 0.00 Bathroom,
Land on 320.00 Acres

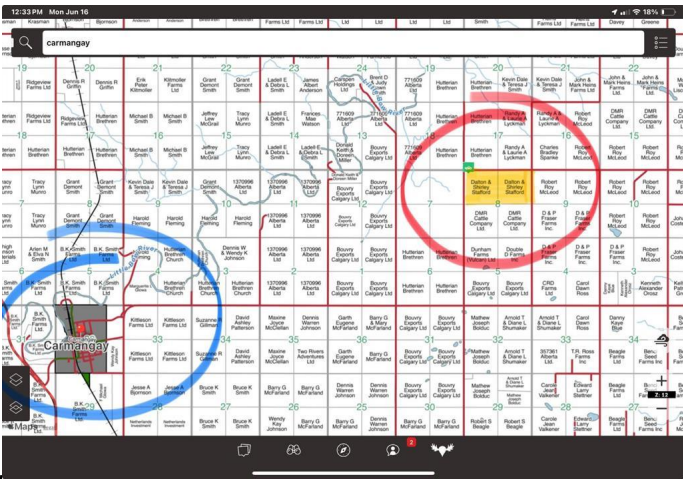
NONE, Rural Vulcan County, Alberta

320 acres of revenue producing farmland available in Vulcan County. Just 12 minutes east of Carmangay or Highway 23. A full half section with 290 acres of crop land and 30 acres of pasture. There are two windmills that generate a substantial source of revenue (\$30k to \$40k more or less each year.) A Beautiful place to build your dream!



Essential Information

MLS® #	A2237686
Price	\$1,650,000
Bathrooms	0.00
Acres	320.00
Type	Land
Sub-Type	Commercial Land
Status	Active



Community Information

Address	142 Township Range Rd. 225 Township
Subdivision	NONE
City	Rural Vulcan County
County	Vulcan County
Province	Alberta
Postal Code	T0L0N0

Additional Information

Date Listed	July 7th, 2025
-------------	----------------

Days on Market	46
Zoning	AG

Listing Details

Listing Office	Century 21 Foothills Real Estate
----------------	----------------------------------

Data is supplied by Pillar 9â„¢ MLS® System. Pillar 9â„¢ is the owner of the copyright in its MLS® System. Data is deemed reliable but is not guaranteed accurate by Pillar 9â„¢. The trademarks MLS®, Multiple Listing Service® and the associated logos are owned by The Canadian Real Estate Association (CREA) and identify the quality of services provided by real estate professionals who are members of CREA. Used under license.