

\$739,900 - 68 Lewiston View Ne, Calgary

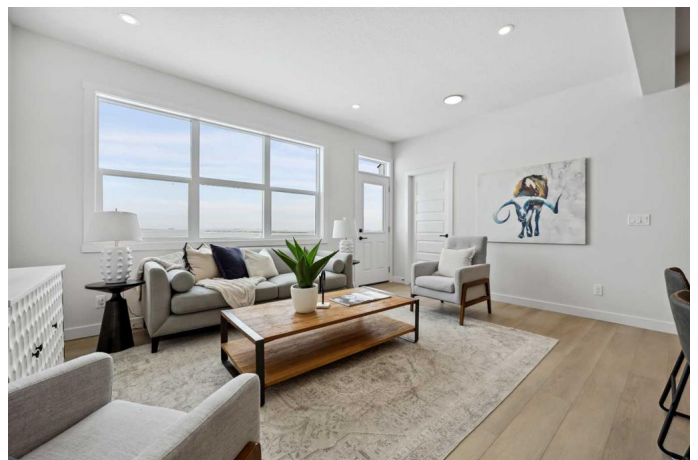
MLS® #A2237836

\$739,900

3 Bedroom, 3.00 Bathroom, 2,061 sqft
Residential on 0.07 Acres

NONE, Calgary, Alberta

Welcome to 68 Lewiston View NE, a beautifully designed new build by Genesis Builders in Calgary's vibrant new northeast community of Lewiston. With 2,061 square feet of thoughtfully crafted living space, four bedrooms, and two and a half bathrooms, this Urban Craftsman-style home offers the perfect blend of style, space, and flexibility. Step inside to discover nine-foot ceilings, luxury vinyl plank flooring in Royal Premium, Mocha, and a bright open-concept layout. The chef-inspired kitchen features shaker-style Estimote cabinets, Elegant White quartz countertops, a Boardwalk matte white backsplash in a bricklay pattern, and a gas range rough-in. The spacious dining area and great room create a seamless flow ideal for both entertaining and everyday living. Upstairs, unwind in the central bonus room, perfect for movie nights or a quiet retreat. The primary suite is a true haven, complete with dual walk-in closets and a beautifully appointed ensuite with modern tile, black and gold fixtures, and a tiled shower. Two additional bedrooms, a full bathroom, and an upper-level laundry to round out the upper floor. Additional features include a rear entry, BBQ gas line, wrought iron spindle railing with espresso stain, upgraded lighting and plumbing in black and gold, and a double attached garage. Ideally located with convenient access to Stoney Trail, schools, green spaces, and Calgary International Airport, this is a home that truly connects lifestyle with location.



Please note: photos shown are from a previous build and are for reference only. Finishings, colors, fireplace design, and ensuite layout will differ in the actual home at 68 Lewiston View NE. Area size was calculated by applying the RMS to the blueprints provided by the builder.

Built in 2025

Essential Information

MLS® #	A2237836
Price	\$739,900
Bedrooms	3
Bathrooms	3.00
Full Baths	2
Half Baths	1
Square Footage	2,061
Acres	0.07
Year Built	2025
Type	Residential
Sub-Type	Detached
Style	2 Storey
Status	Active

Community Information

Address	68 Lewiston View Ne
Subdivision	NONE
City	Calgary
County	Calgary
Province	Alberta
Postal Code	T3P 2J1

Amenities

Parking Spaces	4
Parking	Double Garage Attached
# of Garages	2

Interior

Interior Features	Double Vanity, High Ceilings, Kitchen Island, No Animal Home, No Smoking Home, Quartz Counters, Separate Entrance, Smart Home, Walk-In Closet(s)
Appliances	Dishwasher, Microwave, Range Hood, Refrigerator, Stove(s)
Heating	Forced Air
Cooling	None
Fireplace	Yes
# of Fireplaces	1
Fireplaces	Electric
Has Basement	Yes
Basement	Full, Unfinished

Exterior

Exterior Features	BBQ gas line
Lot Description	Rectangular Lot
Roof	Asphalt Shingle
Construction	Stone, Vinyl Siding, Wood Frame
Foundation	Poured Concrete

Additional Information

Date Listed	July 25th, 2025
Days on Market	2
Zoning	R-G

Listing Details

Listing Office	LPT Realty
----------------	------------

Data is supplied by Pillar 9â„¢ MLS® System. Pillar 9â„¢ is the owner of the copyright in its MLS® System. Data is deemed reliable but is not guaranteed accurate by Pillar 9â„¢. The trademarks MLS®, Multiple Listing Service® and the associated logos are owned by The Canadian Real Estate Association (CREA) and identify the quality of services provided by real estate professionals who are members of CREA. Used under license.