

\$157,900 - 4701 46 Avenue, Mayerthorpe

MLS® #A2239325

\$157,900

3 Bedroom, 2.00 Bathroom, 637 sqft
Residential on 0.10 Acres

NONE, Mayerthorpe, Alberta

Located on a nice paved road on Geinger Ave, in Mayerthorpe, within walking distance of the elementary school and downtown. This three-bedroom, bilevel home features bedrooms located on the lower level. Living room facing the front, north. A good-sized kitchen and dining area with a powder room at the back. Some furniture is included. The wood fence was recently replaced. This backyard also has alley parking. A perfect starter home or investment.

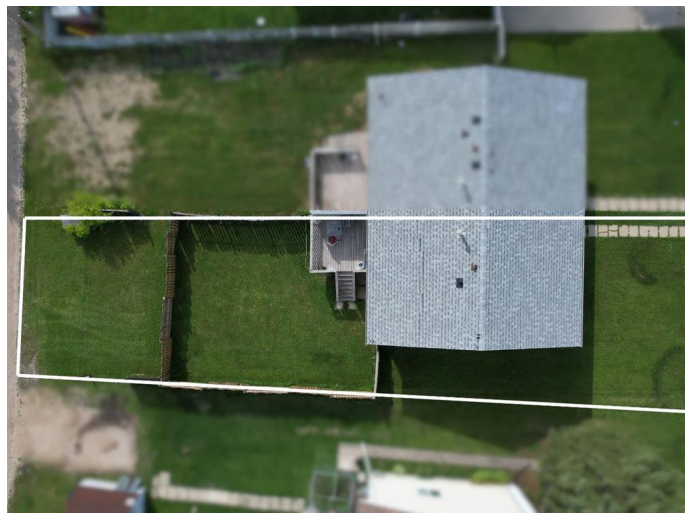
Built in 1978

Essential Information

MLS® #	A2239325
Price	\$157,900
Bedrooms	3
Bathrooms	2.00
Full Baths	1
Half Baths	1
Square Footage	637
Acres	0.10
Year Built	1978
Type	Residential
Sub-Type	Semi Detached
Style	Side by Side, Bi-Level
Status	Active

Community Information

Address 4701 46 Avenue



Subdivision	NONE
City	Mayerthorpe
County	Lac Ste. Anne County
Province	Alberta
Postal Code	T0E 1N0

Amenities

Parking Spaces	4
Parking	Alley Access, Gravel Driveway, Off Street

Interior

Interior Features	Ceiling Fan(s), Closet Organizers, Pantry, Storage
Appliances	Dishwasher, Dryer, Refrigerator, Washer, Window Coverings, Range
Heating	Forced Air
Cooling	None
Has Basement	Yes
Basement	Finished, Full

Exterior

Exterior Features	Private Yard, Lighting
Lot Description	Back Yard, Front Yard, Lawn, Irregular Lot
Roof	Asphalt Shingle
Construction	Mixed
Foundation	Poured Concrete

Additional Information

Date Listed	July 16th, 2025
Days on Market	63
Zoning	R3

Listing Details

Listing Office	ROYAL LEPAGE MODERN REALTY
----------------	----------------------------

Data is supplied by Pillar 9â„¢ MLSÂ® System. Pillar 9â„¢ is the owner of the copyright in its MLSÂ® System. Data is deemed reliable but is not guaranteed accurate by Pillar 9â„¢. The trademarks MLSÂ®, Multiple Listing ServiceÂ® and the associated logos are owned by The Canadian Real Estate Association (CREA) and identify the quality of services provided by real estate professionals who are members of CREA. Used under license.