

\$384,900 - 20 Rice Court Se, Medicine Hat

MLS® #A2242669

\$384,900

3 Bedroom, 2.00 Bathroom, 1,142 sqft

Residential on 0.15 Acres

Ross Glen, Medicine Hat, Alberta

Tucked away in a quiet cul de sac, this 1,142 sq ft three level split backs directly onto green space and offers an ideal location in one of Medicine Hat's most established family neighborhoods. Just steps from schools, scenic coulees, and walking and biking paths, 20 Rice Court combines peaceful surroundings with everyday convenience.

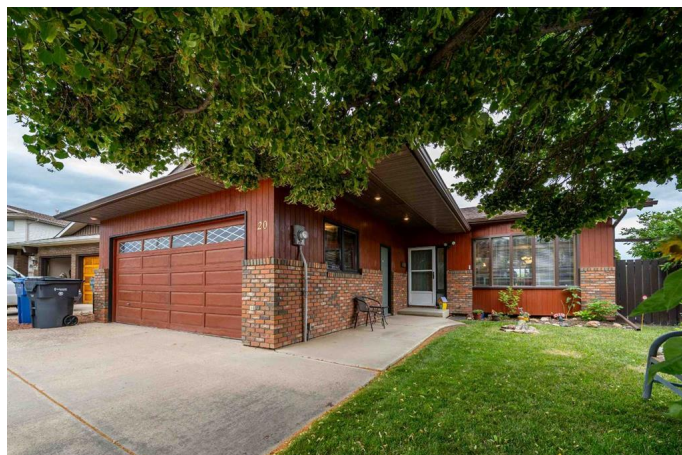
The home features an updated kitchen, newer flooring, and a well maintained interior that feels both warm and functional. The upper level includes two generous bedrooms and a full bath, while the lower level offers a third bedroom and a bright living space. A spacious crawl space adds excellent storage.

The fully fenced yard is perfect for kids or pets, with underground sprinklers and no neighbors behind. A double attached garage completes the package offering the kind of value, space, and location that's hard to find.

Built in 1983

Essential Information

MLS® #	A2242669
Price	\$384,900
Bedrooms	3
Bathrooms	2.00
Full Baths	2
Square Footage	1,142



Acres	0.15
Year Built	1983
Type	Residential
Sub-Type	Detached
Style	3 Level Split
Status	Active

Community Information

Address	20 Rice Court Se
Subdivision	Ross Glen
City	Medicine Hat
County	Medicine Hat
Province	Alberta
Postal Code	T1B3X1

Amenities

Parking Spaces	4
Parking	Double Garage Attached
# of Garages	2

Interior

Interior Features	See Remarks
Appliances	Central Air Conditioner, Dishwasher, Microwave Hood Fan, Refrigerator, Stove(s), Washer/Dryer, Window Coverings
Heating	Forced Air
Cooling	Central Air
Has Basement	Yes
Basement	Crawl Space, Finished, Full

Exterior

Exterior Features	Other
Lot Description	Backs on to Park/Green Space, Cul-De-Sac, Greenbelt, No Neighbours Behind, Underground Sprinklers
Roof	Asphalt Shingle
Construction	Wood Frame
Foundation	Poured Concrete

Additional Information

Date Listed	July 31st, 2025
-------------	-----------------

Days on Market	1
Zoning	R-LD

Listing Details

Listing Office	ROYAL LEPAGE COMMUNITY REALTY
----------------	-------------------------------

Data is supplied by Pillar 9â„¢ MLS® System. Pillar 9â„¢ is the owner of the copyright in its MLS® System. Data is deemed reliable but is not guaranteed accurate by Pillar 9â„¢. The trademarks MLS®, Multiple Listing Service® and the associated logos are owned by The Canadian Real Estate Association (CREA) and identify the quality of services provided by real estate professionals who are members of CREA. Used under license.