

\$150,000 - 141 Speargrass Close, Carseland

MLS® #A2243701

\$150,000

0 Bedroom, 0.00 Bathroom,
Land on 0.23 Acres

NONE, Carseland, Alberta

BYOB...BRING YOUR OWN BUILDER!

Create the home you've been dreaming of on this pie-shaped lot backing the 5th tee box of Speargrass Golf Course. This peaceful golf community in Wheatland County offers more than just stunning views—it's a lifestyle. Enjoy quiet streets, scenic walking paths, a brand-new playground, dog park, and even a space to park your RV. Residents receive discounted golf memberships, and on clear days, you'll catch mountain views just up the hill from the beautiful Bow River. Escape the city and come home to something extraordinary. Your dream home is only 30 minutes to the city limits.



Essential Information

MLS® #	A2243701
Price	\$150,000
Bathrooms	0.00
Acres	0.23
Type	Land
Sub-Type	Residential Land
Status	Active

Community Information

Address	141 Speargrass Close
Subdivision	NONE
City	Carseland
County	Wheatland County

Province Alberta
Postal Code T0J0M0

Amenities

Amenities Dog Park, Park, Playground,

Exterior

Lot Description Pie Shaped Lot, Near Golf Co

School Information

District Golden Hills School Division

Additional Information

Date Listed July 28th, 2025

Days on Market 48

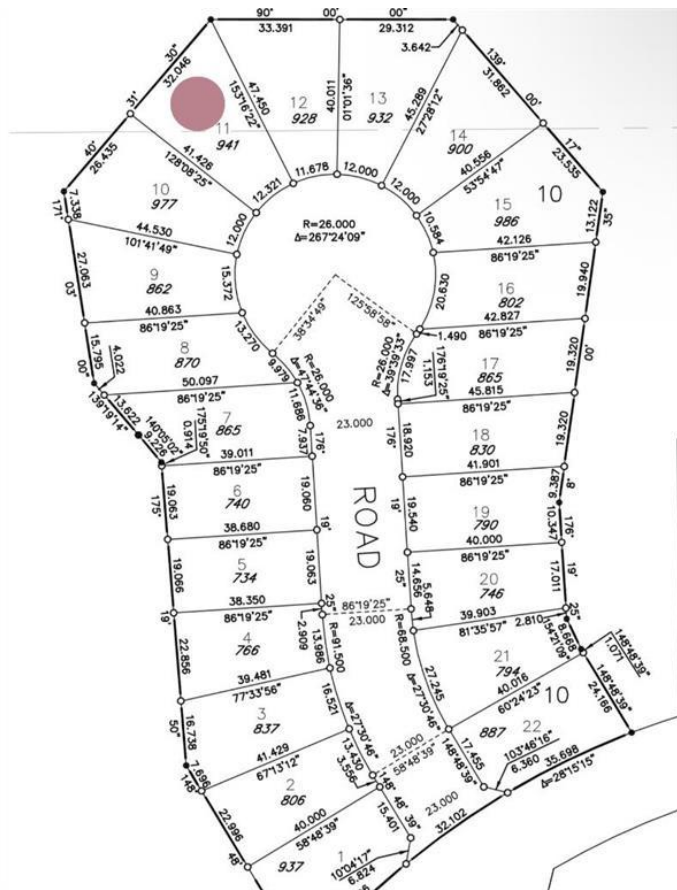
Zoning 450

HOA Fees 50

HOA Fees Freq. ANN

Listing Details

Listing Office RE/MAX Key



Data is supplied by Pillar 9â„¢ MLSÂ® System. Pillar 9â„¢ is the owner of the copyright in its MLSÂ® System. Data is deemed reliable but is not guaranteed accurate by Pillar 9â„¢. The trademarks MLSÂ®, Multiple Listing ServiceÂ® and the associated logos are owned by The Canadian Real Estate Association (CREA) and identify the quality of services provided by real estate professionals who are members of CREA. Used under license.