

# \$239,900 - 3, 895 Mt Sundance Manor W, Lethbridge

MLS® #A2243724

**\$239,900**

2 Bedroom, 1.00 Bathroom, 912 sqft

Residential on 0.00 Acres

Sunridge, Lethbridge, Alberta

Located in Lethbridge's Sunridge, this well-maintained condo offers comfortable living with great amenities. The kitchen features a pantry, island, and solid-surface countertops. The living area is open to the kitchen and filled with natural light. Two bedrooms and a four-piece bathroom are also included. All exterior maintenance, including snow removal and lawn care, is taken care of, making this property perfect for students, investors, or first-time buyers.

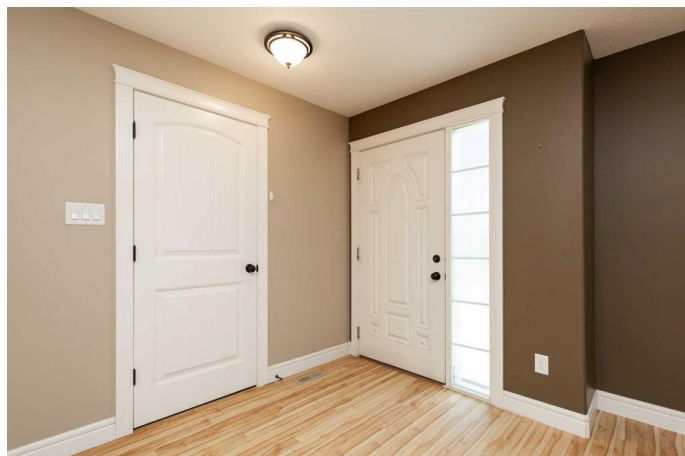
Built in 2009

## Essential Information

MLS® #	A2243724
Price	\$239,900
Bedrooms	2
Bathrooms	1.00
Full Baths	1
Square Footage	912
Acres	0.00
Year Built	2009
Type	Residential
Sub-Type	Apartment
Style	Single Level Unit
Status	Active

## Community Information

Address	3, 895 Mt Sundance Manor W
Subdivision	Sunridge



City	Lethbridge
County	Lethbridge
Province	Alberta
Postal Code	T1J 1X7

### **Amenities**

Amenities	Parking, Snow Removal
Parking Spaces	1
Parking	Assigned, Off Street

### **Interior**

Interior Features	Kitchen Island, Open Floorplan, Pantry, Vinyl Windows
Appliances	Dishwasher, Dryer, Microwave Hood Fan, Refrigerator, Stove(s), Washer, Window Coverings
Heating	Forced Air
Cooling	None
# of Stories	2
Basement	None

### **Exterior**

Exterior Features	None
Roof	Asphalt Shingle
Construction	Vinyl Siding, Wood Frame, Mixed

### **Additional Information**

Date Listed	July 29th, 2025
Days on Market	2
Zoning	R-50

### **Listing Details**

Listing Office	Lethbridge Real Estate.com
----------------	----------------------------

Data is supplied by Pillar 9â„¢ MLS® System. Pillar 9â„¢ is the owner of the copyright in its MLS® System. Data is deemed reliable but is not guaranteed accurate by Pillar 9â„¢. The trademarks MLS®, Multiple Listing Service® and the associated logos are owned by The Canadian Real Estate Association (CREA) and identify the quality of services provided by real estate professionals who are members of CREA. Used under license.