

\$650,000 - 22613 8 Avenue, Hillcrest

MLS® #A2244391

\$650,000

6 Bedroom, 3.00 Bathroom, 1,350 sqft
Residential on 0.17 Acres

NONE, Hillcrest, Alberta

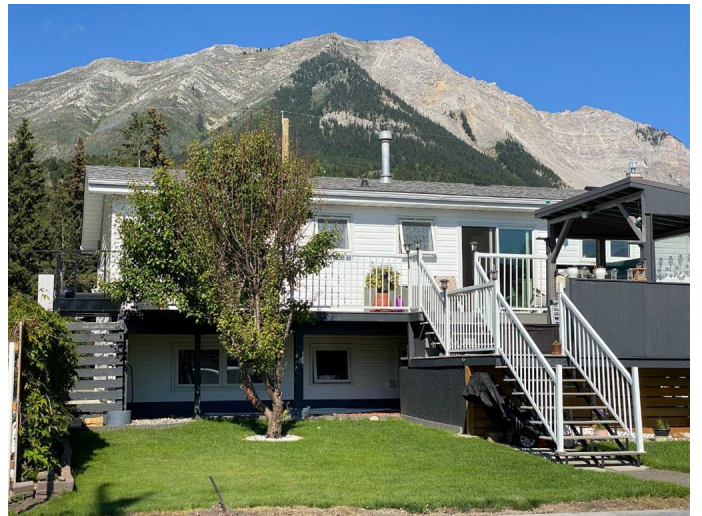
Exceptional home! Immaculate inside and outside! Features a beautifully landscaped yard with a brand new garage under construction. Added bonuses inside - 6 spacious bedrooms, a gas fireplace upstairs, a wood burning stove downstairs, new patio doors just installed in the bright kitchen that leads to an awesome deck overlooking the back yard, Great view of Turtle Mountain! Separate basement entrance to the back yard.

Lots of parking both in the front (large driveway) plus extra parking next to the double garage in the back. Many upgrades make this home totally ready to move in! Must see!

Built in 1977

Essential Information

MLS® #	A2244391
Price	\$650,000
Bedrooms	6
Bathrooms	3.00
Full Baths	2
Half Baths	1
Square Footage	1,350
Acres	0.17
Year Built	1977
Type	Residential
Sub-Type	Detached
Style	Bi-Level



Status Active

Community Information

Address 22613 8 Avenue
Subdivision NONE
City Hillcrest
County Crowsnest Pass
Province Alberta
Postal Code T0K1C0

Amenities

Parking Spaces 6
Parking Alley Access, Double Garage Detached, Driveway, Front Drive, Parking Pad
of Garages 2

Interior

Interior Features Kitchen Island, No Animal Home, No Smoking Home, Separate Entrance
Appliances Dishwasher, Microwave, Refrigerator, Stove(s), Washer/Dryer
Heating Forced Air, Natural Gas
Cooling None
Fireplace Yes
of Fireplaces 2
Fireplaces Basement, Gas, Living Room, Wood Burning
Has Basement Yes
Basement Finished, Full

Exterior

Exterior Features Balcony
Lot Description Back Lane, Back Yard, Front Yard, Landscaped, Lawn, Views, Fruit Trees/Shrub(s)
Roof Asphalt
Construction Vinyl Siding
Foundation Poured Concrete

Additional Information

Date Listed August 1st, 2025
Days on Market 2
Zoning R1

Listing Details

Listing Office SUTTON GROUP-LETHBRIDGE CROWSNEST PASS BRANCH

Data is supplied by Pillar 9â,,ç MLSÂ® System. Pillar 9â,,ç is the owner of the copyright in its MLSÂ® System. Data is deemed reliable but is not guaranteed accurate by Pillar 9â,,ç. The trademarks MLSÂ®, Multiple Listing ServiceÂ® and the associated logos are owned by The Canadian Real Estate Association (CREA) and identify the quality of services provided by real estate professionals who are members of CREA. Used under license.