

\$339,900 - 14, 73 Addington Drive, Red Deer

MLS® #A2244464

\$339,900

2 Bedroom, 3.00 Bathroom, 1,223 sqft

Residential on 0.04 Acres

Aspen Ridge, Red Deer, Alberta

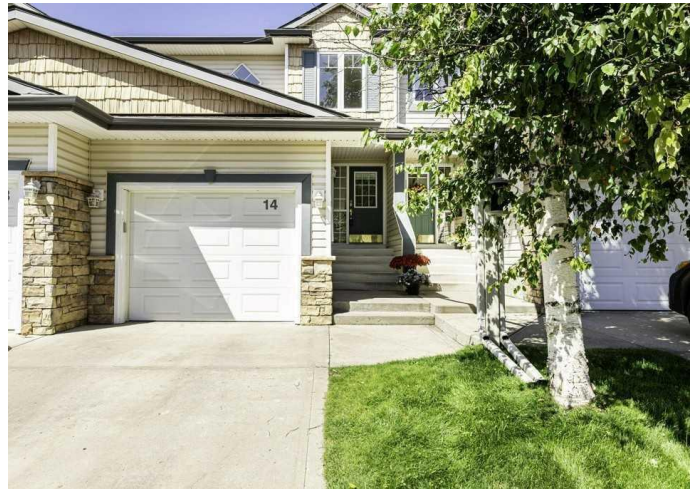
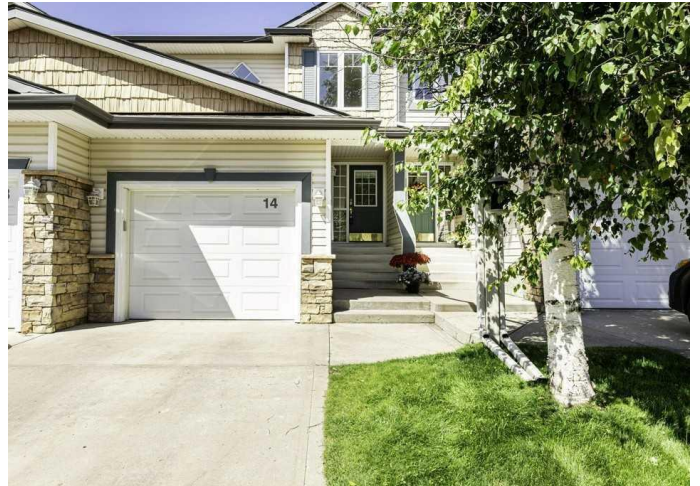
IMMACULATE TOWNHOUSE IN ASPEN RIDGE “SHOWS LIKE NEW!”

This stunning 2-storey townhouse has undergone extensive renovations and offers stylish, low-maintenance living with immediate possession available! Featuring a single attached garage, central A/C, and a walk-out basement, this move-in-ready home is packed with upgrades.

Step inside to discover brand-new luxury vinyl plank flooring, fresh paint, updated trim and baseboards, and modern light fixtures and hardware that elevate the home’s contemporary feel. The bright and spacious main floor boasts an open-concept layout, complete with a cozy gas fireplace, a garden door to the deck, and a generous dining area—perfect for entertaining. The kitchen shines with new stainless steel appliances, a new sink and faucet, and ample cabinetry. A convenient 2-piece renovated bathroom completes the main floor.

Upstairs, you’ll find two generous primary bedrooms, each with walk-in closets and fully renovated 4-piece ensuites featuring new vanities, toilets, and fixtures. Additional highlights include upgraded railings, some new interior doors, vent covers, and smoke/CO2 detectors.

The undeveloped walk-out basement offers endless potential for future development, along with a dedicated laundry area (washer and dryer included) and a utility/storage room. The furnace and ducts have been



professionally cleaned, and the central air conditioner was recently serviced. Located close to schools, parks, transit, and shopping. Two pets under 30 lbs. are allowed with board approval. This beautifully updated home truly shows awesome â€”donâ€™t miss your chance to make it yours!

Built in 2000

Essential Information

MLS® #	A2244464
Price	\$339,900
Bedrooms	2
Bathrooms	3.00
Full Baths	2
Half Baths	1
Square Footage	1,223
Acres	0.04
Year Built	2000
Type	Residential
Sub-Type	Row/Townhouse
Style	2 Storey, Up/Down
Status	Active

Community Information

Address	14, 73 Addington Drive
Subdivision	Aspen Ridge
City	Red Deer
County	Red Deer
Province	Alberta
Postal Code	T4R 2Z6

Amenities

Amenities	Visitor Parking
Parking Spaces	2
Parking	Alley Access, Single Garage Attached
# of Garages	1

Interior

Interior Features	Open Floorplan, Storage, Vinyl Windows
Appliances	Central Air Conditioner, Dishwasher, Electric Stove, Garage Control(s), Microwave, Refrigerator, Washer/Dryer
Heating	Forced Air, Natural Gas
Cooling	Central Air
Fireplace	Yes
# of Fireplaces	1
Fireplaces	Gas, Living Room, Mantle, Tile
Has Basement	Yes
Basement	Full, Unfinished, Walk-Out

Exterior

Exterior Features	Lighting
Lot Description	Back Yard, Front Yard, Standard Shaped Lot
Roof	Asphalt Shingle
Construction	Vinyl Siding, Wood Frame
Foundation	Poured Concrete

Additional Information

Date Listed	July 30th, 2025
Days on Market	2
Zoning	R-M

Listing Details

Listing Office	RE/MAX real estate central alberta
----------------	------------------------------------

Data is supplied by Pillar 9â„¢ MLS® System. Pillar 9â„¢ is the owner of the copyright in its MLS® System. Data is deemed reliable but is not guaranteed accurate by Pillar 9â„¢. The trademarks MLS®, Multiple Listing Service® and the associated logos are owned by The Canadian Real Estate Association (CREA) and identify the quality of services provided by real estate professionals who are members of CREA. Used under license.