

# \$89,900 - 2206, 7201 Poplar Drive, Grande Prairie

MLS® #A2244583

**\$89,900**

0 Bedroom, 1.00 Bathroom, 387 sqft

Residential on 0.00 Acres

South Patterson Place, Grande Prairie, Alberta

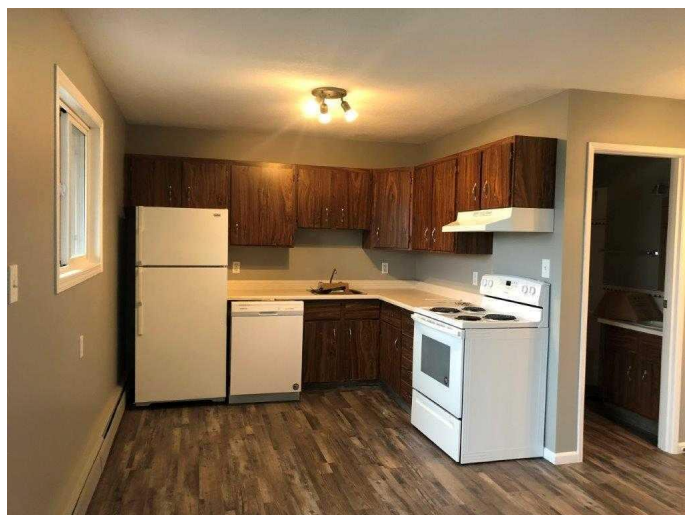
Affordable bachelor suite in excellent south side location! Features stylish new flooring, modern paint colors, updated light fixtures, newer appliances, and updates to the bathroom. This unit offers functional space for comfort and convenience. You have your own private balcony to enjoy your morning coffee, and it's got a separate storage room. Laundry is available for use on the same floor of the complex. One energized parking stall assigned for your usage. This unit will make an excellent rental property, or home base for yourself! (Currently tenant occupied, but will be vacant end of Sept) Call now to book your viewing!

Built in 1981

## Essential Information

MLS® #	A2244583
Price	\$89,900
Bathrooms	1.00
Full Baths	1
Square Footage	387
Acres	0.00
Year Built	1981
Type	Residential
Sub-Type	Apartment
Style	Loft
Status	Active

## Community Information



Address	2206, 7201 Poplar Drive
Subdivision	South Patterson Place
City	Grande Prairie
County	Grande Prairie
Province	Alberta
Postal Code	T8V 6C5

### **Amenities**

Amenities	Parking, Visitor Parking, Laundry, Storage, Trash
Parking Spaces	1
Parking	Off Street, Stall

### **Interior**

Interior Features	Laminate Counters, Storage, Vinyl Windows
Appliances	Built-In Refrigerator, Dishwasher, Electric Stove
Heating	Natural Gas, Baseboard, Hot Water
Cooling	None
# of Stories	3

### **Exterior**

Exterior Features	Balcony, Courtyard
Roof	Asphalt Shingle
Construction	Vinyl Siding, Wood Frame

### **Additional Information**

Date Listed	July 28th, 2025
Days on Market	1
Zoning	RM

### **Listing Details**

Listing Office	Century 21 Grande Prairie Realty Inc.
----------------	---------------------------------------

Data is supplied by Pillar 9â„¢ MLS® System. Pillar 9â„¢ is the owner of the copyright in its MLS® System. Data is deemed reliable but is not guaranteed accurate by Pillar 9â„¢. The trademarks MLS®, Multiple Listing Service® and the associated logos are owned by The Canadian Real Estate Association (CREA) and identify the quality of services provided by real estate professionals who are members of CREA. Used under license.