

\$206,500 - 12528 Twp Rd 683 # Se 19, Lac La Biche County

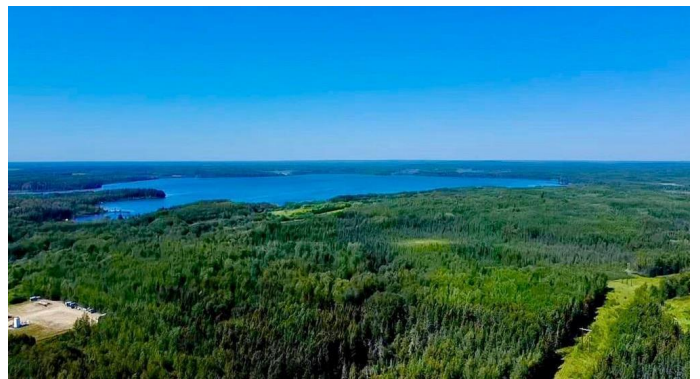
MLS® #A2245911

\$206,500

0 Bedroom, 0.00 Bathroom,
Land on 156.88 Acres

NONE, Lac La Biche County, Alberta

Quarter Section with Revenue! 156.88 acres next to the park reserve on Square Lake! Located at 12528 Township Road 683 just East of the Square Lake subdivision and boat launch. If you enjoy hunting, fishing and the great outdoors-check out this treed quarter section that is very close to popular Square Lake! SALE PRICE \$206,500 plus GST. ROW income of \$4,450 per annum.



Essential Information

MLS® #	A2245911
Price	\$206,500
Bathrooms	0.00
Acres	156.88
Type	Land
Sub-Type	Recreational
Status	Active

Community Information

Address	12528 Twp Rd 683 # Se 19
Subdivision	NONE
City	Lac La Biche County
County	Lac La Biche County
Province	Alberta
Postal Code	T0A 2C0

Additional Information

Date Listed August 13th, 2025

Days on Market 6

Zoning Agricultural

Listing Details

Listing Office RE/MAX LA BICHE REALTY

Data is supplied by Pillar 9â,,ç MLSÂ® System. Pillar 9â,,ç is the owner of the copyright in its MLSÂ® System. Data is deemed reliable but is not guaranteed accurate by Pillar 9â,,ç. The trademarks MLSÂ®, Multiple Listing ServiceÂ® and the associated logos are owned by The Canadian Real Estate Association (CREA) and identify the quality of services provided by real estate professionals who are members of CREA. Used under license.