

\$394,500 - 290 Mildred Dobbs Boulevard N, Lethbridge

MLS® #A2250273

\$394,500

3 Bedroom, 3.00 Bathroom, 1,046 sqft

Residential on 0.06 Acres

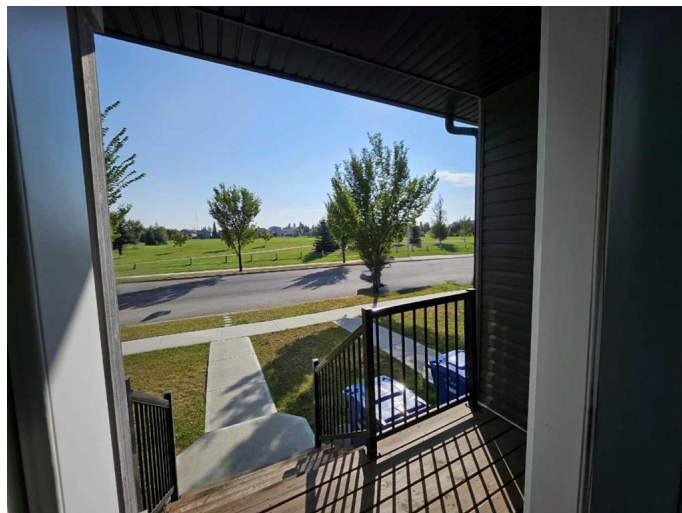
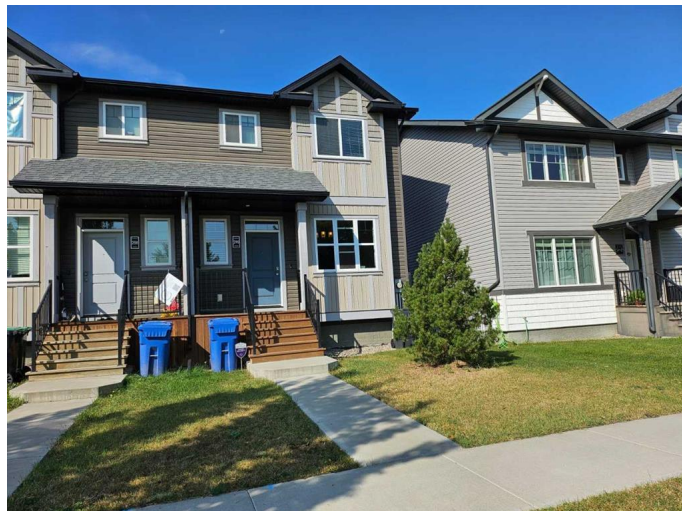
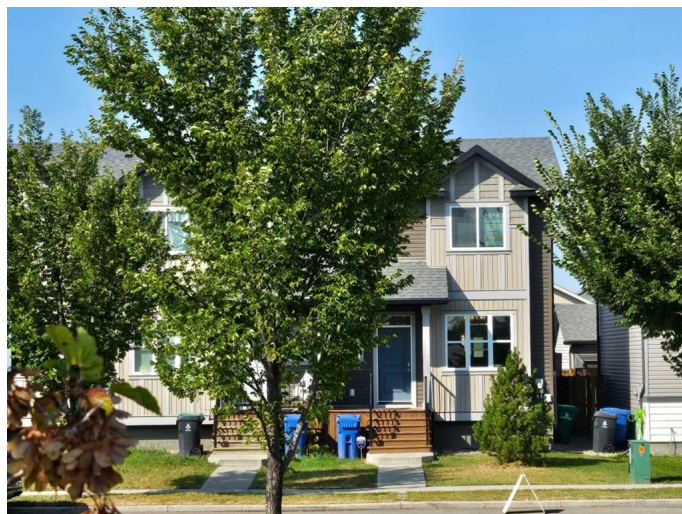
Legacy Ridge / Hardieville, Lethbridge, Alberta

This two-storey Legacy Ridge home offers sunrise views from both the living room and master's bedroom, overlooking green space from the park. The bright, open-concept main floor includes a modern kitchen with a quartz island & counter top, spacious living & dining area perfect for family gatherings & entertaining guests and a washroom for added convenience. Upstairs features two large bedrooms, each with a walk-in closet and a 4pc ensuite. The finished basement adds a family room and third bedroom. Location is across St Teresa of Calcutta School, walking distance to Alexander Wilderness Park and Tim Horton's, and best of all no condo fees, parking with a plug-in & a power outlet ready for those wishing to have an outdoor tub.

Built in 2015

Essential Information

MLS® #	A2250273
Price	\$394,500
Bedrooms	3
Bathrooms	3.00
Full Baths	2
Half Baths	1
Square Footage	1,046
Acres	0.06
Year Built	2015
Type	Residential



Sub-Type	Row/Townhouse
Style	Townhouse
Status	Active

Community Information

Address	290 Mildred Dobbs Boulevard N
Subdivision	Legacy Ridge / Hardieville
City	Lethbridge
County	Lethbridge
Province	Alberta
Postal Code	T1H 7E3

Amenities

Parking Spaces	2
Parking	Alley Access, Off Street, Parking Pad

Interior

Interior Features	Walk-In Closet(s)
Appliances	Dishwasher, Electric Range, Microwave Hood Fan, Refrigerator, Washer/Dryer, Window Coverings
Heating	Forced Air
Cooling	None
Has Basement	Yes
Basement	Finished, Full

Exterior

Exterior Features	Other
Lot Description	Landscaped, Standard Shaped Lot
Roof	Asphalt Shingle
Construction	Wood Frame
Foundation	Poured Concrete

Additional Information

Date Listed	September 14th, 2025
Zoning	R-M

Listing Details

Listing Office	Initia Real Estate
----------------	--------------------

Data is supplied by Pillar 9â„¢ MLSÂ® System. Pillar 9â„¢ is the owner of the copyright in its MLSÂ® System. Data is deemed reliable but is not guaranteed accurate by Pillar 9â„¢. The trademarks MLSÂ®, Multiple Listing ServiceÂ® and

the associated logos are owned by The Canadian Real Estate Association (CREA) and identify the quality of services provided by real estate professionals who are members of CREA. Used under license.