

# \$958,800 - 11, 4339 Township 304, Rural Mountain View County

---

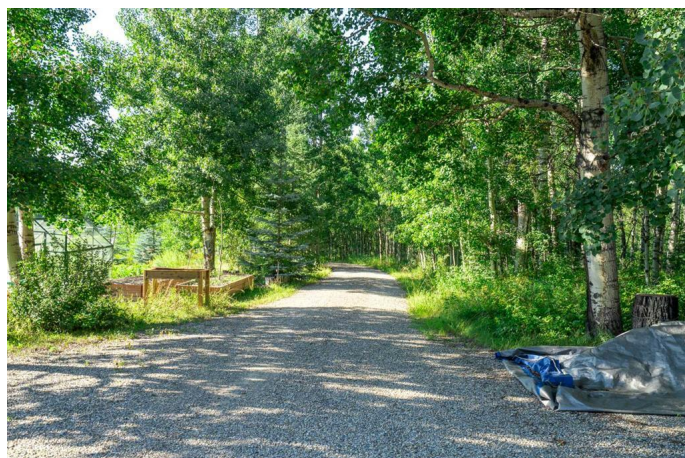
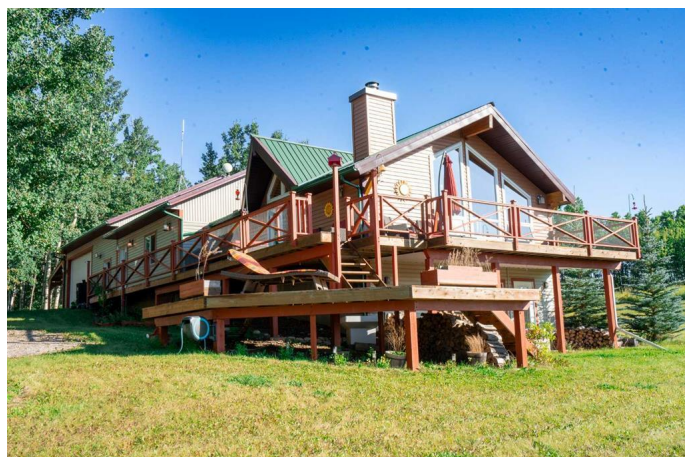
MLS® #A2251430

**\$958,800**

2 Bedroom, 2.00 Bathroom, 2,670 sqft  
Residential on 5.29 Acres

NONE, Rural Mountain View County, Alberta

A private 5-acre retreat with a stunning view of the Little Red Deer River valley blends craftsmanship, comfort, and character, this is a must see! A solar-powered Gated entrance and beautifully treed driveway leads to a gorgeous 2003 Walk-Out Bungalow with sweeping valley views. Inside, Custom finishings shine—Curly Eastern Maple hardwood floors, Figured Silver Maple cabinetry, and Brazilian Cherrywood accents highlight the quality throughout. Vaulted ceilings with exposed Douglas Fir beams add openness, while the Wood-burning stove and the big windows add natural light, creating a cozy, inviting living space. The Chef's™ kitchen features a flush gas Jenn-Air cooktop, built-in Jenn-Air oven, stainless appliances with easy flow to the Dining area and a west-facing wrap-around Deck—perfect for entertaining or relaxing. The main level includes a large recreation room that could be converted into one or two additional bedrooms. The Walkout lower level is home to a spacious Primary suite with Walk-in closet and spa-inspired Ensuite boasting a Soaker tub and separate shower. Three office spaces, a huge rec room, and a cold storage closet provide flexibility for work, hobbies, or family living. In-floor heat runs throughout the basement and the oversized 30x30' garage for year-round comfort. The acreage is equally impressive outdoors: 50 lilac bushes, three



garden plots, a greenhouse and a charming She-Shed for creative escapes. A lean-to and large tent offer shaded gathering space & extra storage space. Just out your back gate, a short, beautifully treed trail leads to the sandy banks of the Little Red Deer Riverâ€”ideal for quiet walks, fishing, or summer swims. Thoughtful features like a professionally wired generator, will power your entire home and a manual hand pump on the well, this property combines peace of mind with natural beauty. If youâ€™re searching for a private, well-designed home with space to grow, create, and enjoy nature, this one should be at the top of your list.

Built in 2003

### Essential Information

MLS® #	A2251430
Price	\$958,800
Bedrooms	2
Bathrooms	2.00
Full Baths	2
Square Footage	2,670
Acres	5.29
Year Built	2003
Type	Residential
Sub-Type	Detached
Style	Acreage with Residence, Bungalow
Status	Active

### Community Information

Address	11, 4339 Township 304
Subdivision	NONE
City	Rural Mountain View County
County	Mountain View County
Province	Alberta
Postal Code	T0M 0R0

### Amenities

Utilities	Electricity Connected, Natural Gas Connected
Parking	Double Garage Attached, Heated Garage, Oversized, RV Access/Parking
# of Garages	2

## Interior

Interior Features	Beamed Ceilings, No Smoking Home, Vaulted Ceiling(s)
Appliances	Built-In Oven, Dishwasher, Dryer, Freezer, Garage Control(s), Gas Cooktop, Refrigerator, Washer
Heating	In Floor, Forced Air, Natural Gas
Cooling	None
Fireplace	Yes
# of Fireplaces	1
Fireplaces	EPA Certified Wood Stove, Free Standing, Great Room
Has Basement	Yes
Basement	Finished, Full, Walk-Out

## Exterior

Exterior Features	Balcony, Fire Pit
Lot Description	Backs on to Park/Green Space, Cul-De-Sac, Many Trees, No Neighbours Behind, Views, Gentle Sloping, Irregular Lot, Sloped Down
Roof	Metal
Construction	Vinyl Siding, Wood Frame
Foundation	Poured Concrete

## Additional Information

Date Listed	September 1st, 2025
Days on Market	5
Zoning	R-CR Country Residential

## Listing Details

Listing Office	Coldwell Banker OnTrack Realty
----------------	--------------------------------

Data is supplied by Pillar 9â„¢ MLSÂ® System. Pillar 9â„¢ is the owner of the copyright in its MLSÂ® System. Data is deemed reliable but is not guaranteed accurate by Pillar 9â„¢. The trademarks MLSÂ®, Multiple Listing ServiceÂ® and the associated logos are owned by The Canadian Real Estate Association (CREA) and identify the quality of services provided by real estate professionals who are members of CREA. Used under license.