

\$1,680,000 - 302 38 Avenue Sw, Calgary

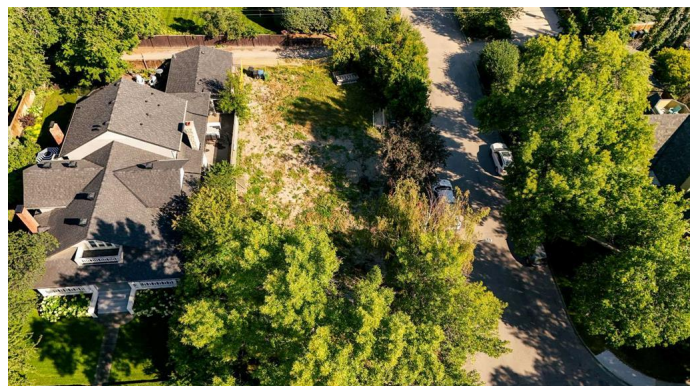
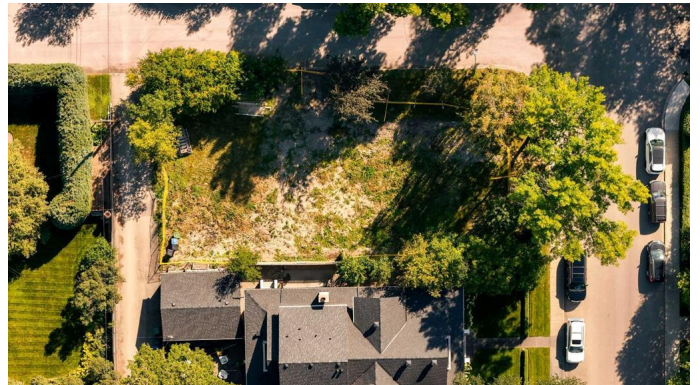
MLS® #A2252201

\$1,680,000

0 Bedroom, 0.00 Bathroom,
Land on 0.14 Acres

Elbow Park, Calgary, Alberta

Prime opportunity in Elbow Park. This 50â€™™ x 125â€™™ (R-CG) lot is fully cleared and ready to go, with an approved Development Permit in place for a custom ~3,700 sq ft luxury single-family home plus detached triple garage. Total proposed developed living area is over ~5,300 sq ft including a fully finished basement. This is a bring-your-own-builder sale for the lot and approved DP onlyâ€”not a completed build. A rare chance to secure a premium inner-city parcel with plans approved and months of design and City of Calgary approvals already completed. Located on a quiet street in prestigious Elbow Park, surrounded by high-end homes and close to river pathways, parks, top-rated schools, and easy access to downtown. This property is ideal for builders or end-users wanting to move directly into construction without delay.



Essential Information

MLS® #	A2252201
Price	\$1,680,000
Bathrooms	0.00
Acres	0.14
Type	Land
Sub-Type	Residential Land
Status	Active

Community Information

Address	302 38 Avenue Sw
---------	------------------

Subdivision	Elbow Park
City	Calgary
County	Calgary
Province	Alberta
Postal Code	T2S0V8

Additional Information

Date Listed	August 30th, 2025
Days on Market	1
Zoning	R-CG

Listing Details

Listing Office	Charles
----------------	---------

Data is supplied by Pillar 9â„¢ MLS® System. Pillar 9â„¢ is the owner of the copyright in its MLS® System. Data is deemed reliable but is not guaranteed accurate by Pillar 9â„¢. The trademarks MLS®, Multiple Listing Service® and the associated logos are owned by The Canadian Real Estate Association (CREA) and identify the quality of services provided by real estate professionals who are members of CREA. Used under license.