

\$569,900 - 1010 Memorial Drive Se, Redcliff

MLS® #A2253117

\$569,900

4 Bedroom, 3.00 Bathroom, 1,344 sqft

Residential on 0.13 Acres

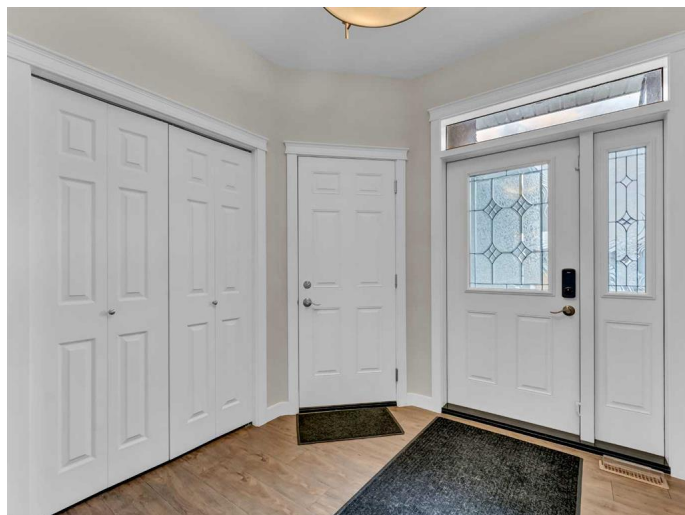
NONE, Redcliff, Alberta

Perfect family home in a fantastic location! This spacious, original-owner bungalow offers tons of natural light, 4 bedrooms, 3 bathrooms, and a family-friendly layout with main floor laundry. You will be sure to love the open floor plan. The cozy family room features a gas fireplace, and the enclosed, covered deck provides a great space to relax and enjoy the view year-round and don't miss the remote blinds for your comfort and convenience. Outside, you'll find a low-maintenance yard with artificial turf, RV parking, a large shed (perfect for storage or for your hobbies), and a heated double attached garage—plenty of room for all your family's needs. A well-cared-for home with room to grow and make memories! A rare find with excellent curb appeal. Don't miss this great opportunity to own a lovingly cared-for home that checks all the boxes!

Built in 2015

Essential Information

MLS® #	A2253117
Price	\$569,900
Bedrooms	4
Bathrooms	3.00
Full Baths	2
Half Baths	1
Square Footage	1,344
Acres	0.13



Year Built	2015
Type	Residential
Sub-Type	Detached
Style	Bungalow
Status	Active

Community Information

Address	1010 Memorial Drive Se
Subdivision	NONE
City	Redcliff
County	Cypress County
Province	Alberta
Postal Code	T0J 2P0

Amenities

Parking Spaces	4
Parking	Double Garage Attached, Off Street, RV Access/Parking
# of Garages	2

Interior

Interior Features	Bar, Kitchen Island, Open Floorplan, Storage, Walk-In Closet(s)
Appliances	Dishwasher, Microwave, Refrigerator, Stove(s), Washer/Dryer, Window Coverings
Heating	Forced Air
Cooling	Central Air
Fireplace	Yes
# of Fireplaces	1
Fireplaces	Gas
Has Basement	Yes
Basement	Finished, Full

Exterior

Exterior Features	Private Yard
Lot Description	Back Yard, Landscaped, Low Maintenance Landscape, Private
Roof	Asphalt Shingle
Construction	Wood Frame
Foundation	Poured Concrete

Additional Information

Date Listed	September 2nd, 2025
Days on Market	7
Zoning	R1

Listing Details

Listing Office	RE/MAX MEDALTA REAL ESTATE
----------------	----------------------------

Data is supplied by Pillar 9â„¢ MLSÂ® System. Pillar 9â„¢ is the owner of the copyright in its MLSÂ® System. Data is deemed reliable but is not guaranteed accurate by Pillar 9â„¢. The trademarks MLSÂ®, Multiple Listing ServiceÂ® and the associated logos are owned by The Canadian Real Estate Association (CREA) and identify the quality of services provided by real estate professionals who are members of CREA. Used under license.